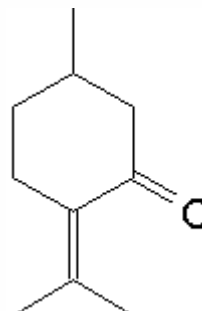


SPECIFICATION SHEET

VERSION 2,00 **VERSION DATE** 13/03/24 **PRINT DATE** 07/05/24

PRODUCT	PULEGONE NATURAL (EX PENNYROYAL)
APPLICATIONS	Industrial raw material not intended for direct use.
IUPAC NAME	1-METHYL-4-ISOPROPYLIDENE-3-CYCLOHEXANONE
SYNONYMS	P-MENTH-4(8)-EN-3-ONE, (1R)-(+)-PULEGONE
PLANT OF ORIGIN	Mentha pulegium L.
PART OF THE PLANT	FLOWERING PLANT
FORMULA	C ₁₀ H ₁₆ O
MOLECULAR WEIGHT	152,00
CAS	89-82-7
CAS 2	15932-80-6
EINECS	201-943-2
EINECS 2	240-070-1
FEMA	2963
TARIFF NUMBER	2914290090
KOSHER CERTIFICATE	AVAILABLE ON REQUEST



REACH REGISTRATION NO. Exempt from registration (imported/manufactured < 1 ton/year)

SPECIFICATIONS

ASPECT AT 20°C	CLEAR MOBILE LIQUID
COLOUR	COLORLESS - PALE YELLOW
ODOUR	MINTY, FRESH
TASTE	
DENSITY AT 20°C (g / ml)	0,930 - 0,940
DENSITY 25/25	-
REFRACTIVE INDEX n_D20	1,4830 - 1,4930
REFRACTIVE INDEX n_D25	-
OPTICAL ROTATION (°)	19,00 / 25,00
BOILING POINT (°C)	223 - 225
MELTING POINT (°C)	-
FLASH POINT (°C)	82,00
ASSAY (% GC)	> 90
ACID VALUE (mg KOH/g)	-
SOLUBILITY	INSOLUBLE IN WATER
VAPOUR PRESSURE	NOT DETERMINED
OTHER SOLUBILITIES	SOLUBLE IN ETHANOL

OTHER TECHNICAL DATA NATURAL (R)-DEXTRO QUALITY.

STABILITY AND STORAGE

KEEP IN TIGHTLY CLOSED CONTAINER IN A COOL AND DRY PLACE, PROTECTED FROM LIGHT. WHEN STORED FOR MORE THAN 24 MONTHS, QUALITY SHOULD BE CHECKED BEFORE USE.

WE BELIEVE THE ABOVE INFORMATION TO BE CORRECT BUT WE DO NOT PRESENT IT AS ALL INCLUSIVE AND AS SUCH SHOULD BE USED AS A GUIDE. IT IS THE SOLE RESPONSIBILITY OF THE RECEIVER OF OUR PRODUCT TO COMPLY WITH EXISTING REGULATIONS AND INSTRUCTIONS.

THIS PRODUCT HAS NOT BEEN FILTERED DUE TO TECHNICAL REASONS. WE RECOMMEND NOT TO USE IT UNLESS FILTERED WHEN USED AS A RAW MATERIAL IN FOOD INTENDED FOR FINAL CONSUMERS.