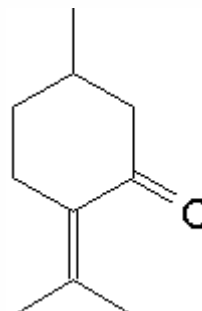


SPECIFICATION SHEET

VERSION	2,00	VERSION DATE	13/03/24	PRINT DATE	28/04/24
PRODUCT	PULEGONE NATURAL (EX PENNYROYAL)				
APPLICATIONS	Industrial raw material not intended for direct use.				
IUPAC NAME	1-METHYL-4-ISOPROPYLIDENE-3-CYCLOHEXANONE				
SYNONYMS	P-MENTH-4(8)-EN-3-ONE, (1R)-(+)-PULEGONE				
PLANT OF ORIGIN	Mentha pulegium L.				
PART OF THE PLANT	FLOWERING PLANT				
FORMULA	C10 H16 O				
MOLECULAR WEIGHT	152,00				
CAS	89-82-7				
CAS 2	15932-80-6				
EINECS	201-943-2				
EINECS 2	240-070-1				
FEMA	2963				
TARIFF NUMBER	2914290090				
KOSHER CERTIFICATE	AVAILABLE ON REQUEST				



REACH REGISTRATION NO. Exempt from registration (imported/manufactured < 1 ton/year)

SPECIFICATIONS

ASPECT AT 20°C	CLEAR MOBILE LIQUID	
COLOUR	COLORLESS - PALE YELLOW	
ODOUR	MINTY, FRESH	
TASTE		
DENSITY AT 20°C (g / ml)	0,930	- 0,940
DENSITY 25/25	-	
REFRACTIVE INDEX nD20	1,4830	- 1,4930
REFRACTIVE INDEX nD25	-	
OPTICAL ROTATION (°)	19,00	/ 25,00
BOILING POINT (°C)	223 - 225	
MELTING POINT (°C)	-	
FLASH POINT (°C)	82,00	
ASSAY (% GC)	> 90	
ACID VALUE (mg KOH/g)	-	
SOLUBILITY	INSOLUBLE IN WATER	
VAPOUR PRESSURE	NOT DETERMINED	
OTHER SOLUBILITIES	SOLUBLE IN ETHANOL	

OTHER TECHNICAL DATA NATURAL (R)-DEXTRO QUALITY.

STABILITY AND STORAGE

KEEP IN TIGHTLY CLOSED CONTAINER IN A COOL AND DRY PLACE, PROTECTED FROM LIGHT. WHEN STORED FOR MORE THAN 24 MONTHS, QUALITY SHOULD BE CHECKED BEFORE USE.

WE BELIEVE THE ABOVE INFORMATION TO BE CORRECT BUT WE DO NOT PRESENT IT AS ALL INCLUSIVE AND AS SUCH SHOULD BE USED AS A GUIDE. IT IS THE SOLE RESPONSIBILITY OF THE RECEIVER OF OUR PRODUCT TO COMPLY WITH EXISTING REGULATIONS AND INSTRUCTIONS.

THIS PRODUCT HAS NOT BEEN FILTERED DUE TO TECHNICAL REASONS. WE RECOMMEND NOT TO USE IT UNLESS FILTERED WHEN USED AS A RAW MATERIAL IN FOOD INTENDED FOR FINAL CONSUMERS.