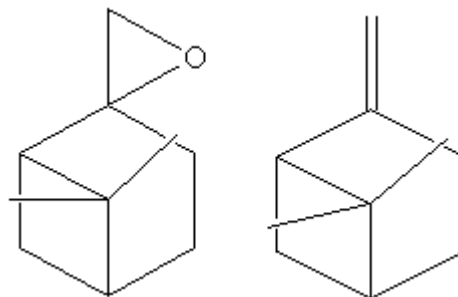


SPECIFICATION SHEET

VERSION 1,00 **VERSION DATE** 19/09/22 **PRINT DATE** 02/05/24

PRODUCT	ROSEMAREL IFF
APPLICATIONS	Industrial raw material not intended for direct use.
IUPAC NAME	MULTICOMPONENTS
SYNONYMS	6,6DIMETHYL-2-METHYLENEBICYCLO 3,1,1 HEPTANE+2,10 EPOXYPINAN
FORMULA	C10 H16 O
MOLECULAR WEIGHT	152,00
CAS	-
EINECS	-
TARIFF NUMBER	3302909000
KOSHER CERTIFICATE	AVAILABLE ON REQUEST
REACH REGISTRATION NO.	01-2120755294-51



SPECIFICATIONS

ASPECT AT 20°C	LIQUID
COLOUR	COLORLESS
ODOUR	HERBAL, CAMPHOR
TASTE	
DENSITY AT 20°C (g / ml)	0,924 - 0,940
DENSITY 25/25	-
REFRACTIVE INDEX nD20	1,4760 - 1,4820
REFRACTIVE INDEX nD25	-
OPTICAL ROTATION (°)	/
BOILING POINT (°C)	
MELTING POINT (°C)	
FLASH POINT (°C)	43,00
ASSAY (% GC)	PINENE,BETA 45 - 55%; PINENE EPOXIDE,BETA:20-40%
ACID VALUE (mg KOH/g)	
SOLUBILITY	INSOLUBLE IN WATER
VAPOUR PRESSURE	2,03 hPa (calculated)
OTHER SOLUBILITIES	SOLUBLE IN ETHANOL

OTHER TECHNICAL DATA

STABILITY AND STORAGE

KEEP IN TIGHTLY CLOSED CONTAINER IN A COOL AND DRY PLACE, PROTECTED FROM LIGHT. WHEN STORED FOR MORE THAN 24 MONTHS, QUALITY SHOULD BE CHECKED BEFORE USE.
NOT DETERMINED

WE BELIEVE THE ABOVE INFORMATION TO BE CORRECT BUT WE DO NOT PRESENT IT AS ALL INCLUSIVE AND AS SUCH SHOULD BE USED AS A GUIDE. IT IS THE SOLE RESPONSIBILITY OF THE RECEIVER OF OUR PRODUCT TO COMPLY WITH EXISTING REGULATIONS AND INSTRUCTIONS.