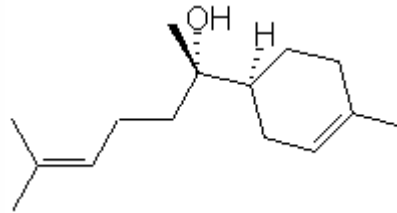


SPECIFICATION SHEET

VERSION 2,00 **VERSION DATE** 29/10/09 **PRINT DATE** 30/03/20

PRODUCT	BISABOLOL ALPHA NATURAL
APPLICATIONS	Raw material for industrial use intended for the manufacture of cosmetics.
IUPAC NAME	ALPHA-BISABOLOL
SYNONYMS	L-(-)-ALPHA-BISABOLOL
PLANT OF ORIGIN	Vanillomosopsis erythropappa(Eremanthus erythropp.)
PART OF THE PLANT	WOOD, "CANDEIA" OIL ("VIROLA OLEIFERA")
FORMULA	C15 H26 O
MOLECULAR WEIGHT	222,00
CAS	515-69-5
CAS 2	23089-26-1
EINECS	208-205-9
EINECS 2	245-423-3
FEMA	-
TARIFF NUMBER	2906190090
KOSHER CERTIFICATE	AVAILABLE ON REQUEST



REACH REGISTRATION NO. Exempt from registration (imported/manufactured < 1 ton/year)

SPECIFICATIONS

ASPECT AT 20° C	VISCOUS LIQUID
COLOUR	COLORLESS TO PALE YELLOW
ODOUR	SWEET AND FLORAL
TASTE	
DENSITY A 20° C (g / ml)	0,920 - 0,935
DENSITY 25/25	-
REFRACTIVE INDEX nD20	1,4930 - 1,4980
REFRACTIVE INDEX nD25	-
OPTICAL ROTATION (°)	-65,00 / -50,00
BOILING POINT (°C)	265°C (1 atm); 126°C(702 mm Hg)
MELTING POINT (°C)	
FLASH POINT (°C)	101,00
ASSAY (% GC)	> 95
ACID VALUE (mg KOH/g)	-
SOLUBILITY	INSOLUBLE IN WATER
VAPOUR PRESSURE	NOT DETERMINED
OTHER SOLUBILITIES	SOLUBLE IN ETHANOL

OTHER TECHNICAL DATA

STABILITY AND STORAGE

KEEP IN TIGHTLY CLOSED CONTAINER IN A COOL AND DRY PLACE, PROTECTED FROM LIGHT. WHEN STORED FOR MORE THAN 24 MONTHS, QUALITY SHOULD BE CHECKED BEFORE USE.

WE BELIEVE THE ABOVE INFORMATION TO BE CORRECT BUT WE DO NOT PRESENT IT AS ALL INCLUSIVE AND AS SUCH SHOULD BE USED AS A GUIDE. IT IS THE SOLE RESPONSIBILITY OF THE RECEIVER OF OUR PRODUCT TO COMPLY WITH EXISTING REGULATIONS AND INSTRUCTIONS.