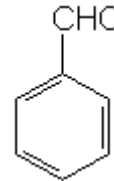


## SPECIFICATION SHEET

**VERSION** 2,00      **VERSION DATE** 03/02/14      **PRINT DATE** 23/02/20

**PRODUCT** BENZALDEHYDE NATURAL BESTALLY  
**APPLICATIONS** Raw material for industrial use intended for the manufacture of flavours and/or fragrances.  
**IUPAC NAME** BENZALDEHYDE  
**SYNONYMS** BENCENECARBONAL / BENCENECARBOXALDEHYDE

**PLANT OF ORIGIN** Cinnamomum cassia L.  
**PART OF THE PLANT** Bark and branch  
**FORMULA** C7 H6 O  
**MOLECULAR WEIGHT** 106,00  
**CAS** 100-52-7



**EINECS** 202-860-4

**FEMA** 2127  
**TARIFF NUMBER** 2912210000  
**KOSHER CERTIFICATE** AVAILABLE ON REQUEST  
**FOOD GRADE CERTIFICATE** AVAILABLE ON REQUEST  
**REACH REGISTRATION NO.** On request. REACH and non-REACH material available for this product.

### SPECIFICATIONS

**ASPECT AT 20° C** CLEAR MOBILE LIQUID  
**COLOUR** COLORLESS TO PALE YELLOW  
**ODOUR** ALMOND-LIKE  
**TASTE**  
**DENSITY A 20° C (g / ml)** 1,041 - 1,046  
**DENSITY 25/25** -  
**REFRACTIVE INDEX nD20** 1,5440 - 1,5460  
**REFRACTIVE INDEX nD25** -  
**OPTICAL ROTATION (°)** /  
**BOILING POINT (°C)** 179 (760 mm Hg);112,5 (100 mm)  
**MELTING POINT (°C)** -26  
**FLASH POINT (°C)** 64,00  
**ASSAY (% GC)** > 98  
**ACID VALUE (mg KOH/g)** < 5  
**SOLUBILITY** SOLUBILITY IN WATER: 0,6%  
**VAPOUR PRESSURE** 0,75 mm Hg 20°C;10 mm Hg 62°C  
**OTHER SOLUBILITIES** SOLUBLE IN ETHANOL

### OTHER TECHNICAL DATA

### STABILITY AND STORAGE

KEEP IN TIGHTLY CLOSED CONTAINER IN A COOL AND DRY PLACE, PROTECTED FROM LIGHT. WHEN STORED FOR MORE THAN 12 MONTHS, QUALITY SHOULD BE CHECKED BEFORE USE.  
PURGE HEADSPACE WITH NITROGEN.

WE BELIEVE THE ABOVE INFORMATION TO BE CORRECT BUT WE DO NOT PRESENT IT AS ALL INCLUSIVE AND AS SUCH SHOULD BE USED AS A GUIDE. IT IS THE SOLE RESPONSIBILITY OF THE RECEIVER OF OUR PRODUCT TO COMPLY WITH EXISTING REGULATIONS AND INSTRUCTIONS.

THIS PRODUCT HAS NOT BEEN FILTERED DUE TO TECHNOLOGICAL REASONS. WE RECOMMEND NOT TO USE IT UNLESS FILTERED WHEN USED AS A RAW MATERIAL IN FOOD INTENDED FOR FINAL CONSUMERS.