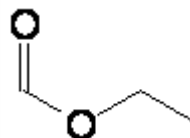


SPECIFICATION SHEET

VERSION	1,00	VERSION DATE	19/09/22	PRINT DATE	19/04/24
PRODUCT	ETHYL FORMATE, NATURAL				
APPLICATIONS	Industrial raw material not intended for direct use.				
IUPAC NAME	ETHYL METHANOATE				
SYNONYMS	METANOATO DE ETILO				
PLANT OF ORIGIN					
PART OF THE PLANT					
FORMULA	C3 H6 O2				
MOLECULAR WEIGHT	74,09				
CAS	109-94-4				
EINECS	203-721-0				
FEMA	2434				
TARIFF NUMBER	2915130090				
FOOD GRADE CERTIFICATE	AVAILABLE ON REQUEST				
REACH REGISTRATION NO.	On request. REACH and non-REACH material available for this product.				



SPECIFICATIONS

ASPECT AT 20°C	CLEAR MOBILE LIQUID	
COLOUR	COLORLESS	
ODOUR	FRUITY, RUM, STRONG, ETHEREAL	
TASTE	SWEET, RUM, FRUITY, BAKED FRUIT, WHISKY	
DENSITY AT 20°C (g / ml)	0,918	- 0,925
DENSITY 25/25	0,916	- 0,921
REFRACTIVE INDEX nD20	1,3590	- 1,3630
REFRACTIVE INDEX nD25	-	
OPTICAL ROTATION (°)	/	
BOILING POINT (°C)	53 - 55	
MELTING POINT (°C)	-80	
FLASH POINT (°C)	-19,00	
ASSAY (% GC)	> 95	
ACID VALUE (mg KOH/g)	<0,2% HFor IODOMETRY	
SOLUBILITY	SOLUBILITY IN WATER 110 g/L (18°C)	
VAPOUR PRESSURE	265,0 mbar (20°C)	
OTHER SOLUBILITIES	SOLUBLE IN ETHANOL. SOLUBLE IN ETHANOL 50% 1:5. SOLUBLE IN ETHANOL 80% 1:1	

OTHER TECHNICAL DATA

STABILITY AND STORAGE

KEEP IN TIGHTLY CLOSED CONTAINER IN A COOL AND DRY PLACE, PROTECTED FROM LIGHT. WHEN STORED FOR MORE THAN 12 MONTHS, QUALITY SHOULD BE CHECKED BEFORE USE.
HIGHLY FLAMMABLE: AVOID HEATING.

WE BELIEVE THE ABOVE INFORMATION TO BE CORRECT BUT WE DO NOT PRESENT IT AS ALL INCLUSIVE AND AS SUCH SHOULD BE USED AS A GUIDE.
IT IS THE SOLE RESPONSIBILITY OF THE RECEIVER OF OUR PRODUCT TO COMPLY WITH EXISTING REGULATIONS AND INSTRUCTIONS.

THIS PRODUCT HAS NOT BEEN FILTERED DUE TO TECHNICAL REASONS. WE RECOMMEND NOT TO USE IT UNLESS FILTERED WHEN USED AS A RAW MATERIAL IN FOOD INTENDED FOR FINAL CONSUMERS.