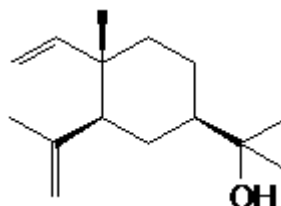


SPECIFICATION SHEET

VERSION 2,00 **VERSION DATE** 09/01/23 **PRINT DATE** 13/01/25

PRODUCT ELEMOL OIL NATURAL (EX-ELEMI)
APPLICATIONS Industrial raw material not intended for direct use.
IUPAC NAME ELEMOL
SYNONYMS

PLANT OF ORIGIN Canarium commune/Elemi gum
PART OF THE PLANT RECTIFICATION OF ELEMI OIL
FORMULA C15 H26 O
MOLECULAR WEIGHT 222,00
CAS 97675-63-3
CAS 2 639-99-6
EINECS 307-636-0
EINECS 2 211-360-5
FEMA 2408
TARIFF NUMBER 3301294900



REACH REGISTRATION NO. On request. REACH and non-REACH material available for this product.

SPECIFICATIONS

ASPECT AT 20°C	MOBILE LIQUID - SOLID
COLOUR	ORANGE
ODOUR	SPICY, CITRIUS, WOODY, RESINOUS
TASTE	
DENSITY AT 20°C (g / ml)	0,970 - 0,980
DENSITY 25/25	-
REFRACTIVE INDEX nD20	1,5000 - 1,5100
REFRACTIVE INDEX nD25	-
OPTICAL ROTATION (°)	/
BOILING POINT (°C)	
MELTING POINT (°C)	
FLASH POINT (°C)	80,00
ASSAY (% GC)	ELEMOL > 70%
ACID VALUE (mg KOH/g)	-
SOLUBILITY	INSOLUBLE IN WATER
VAPOUR PRESSURE	NOT DETERMINED
OTHER SOLUBILITIES	SOLUBLE IN ETHANOL

OTHER TECHNICAL DATA

STABILITY AND STORAGE

KEEP IN TIGHTLY CLOSED CONTAINER IN A COOL AND DRY PLACE, PROTECTED FROM LIGHT. WHEN STORED FOR MORE THAN 12 MONTHS, QUALITY SHOULD BE CHECKED BEFORE USE.

WE BELIEVE THE ABOVE INFORMATION TO BE CORRECT BUT WE DO NOT PRESENT IT AS ALL INCLUSIVE AND AS SUCH SHOULD BE USED AS A GUIDE. IT IS THE SOLE RESPONSIBILITY OF THE RECEIVER OF OUR PRODUCT TO COMPLY WITH EXISTING REGULATIONS AND INSTRUCTIONS.

THIS PRODUCT HAS NOT BEEN FILTERED DUE TO TECHNICAL REASONS. WE RECOMMEND NOT TO USE IT UNLESS FILTERED WHEN USED AS A RAW MATERIAL IN FOOD INTENDED FOR FINAL CONSUMERS.