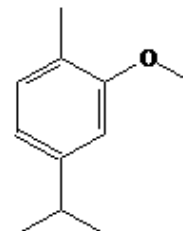


SPECIFICATION SHEET

PRODUCT	CARVACRYL METHYL ETHER
APPLICATIONS	Industrial raw material not intended for direct use.
IUPAC NAME	5-ISOPROPYL-2-METHYLANISOLE
SYNONYMS	4-ISOPROPYL-2-METHOXY-1-METHYLBENZENE
FORMULA	C ₁₁ H ₁₆ O
MOLECULAR WEIGHT	164,25
CAS	6379-73-3
EINECS	228-959-2
TARIFF NUMBER	2909309090



SPECIFICATIONS

VERSION	1	VERSION DATE	19/09/22
----------------	---	---------------------	----------

ASPECT AT 20°C	CLEAR MOBILE LIQUID
COLOUR	COLORLESS TO PALE YELLOW
ODOUR	HERBACEOUS, SPICY, CITRUSY
DENSITY AT 20°C (g / ml)	0,935-0,939
DENSITY 25/25	0,932-0,936
REFRACTIVE INDEX nD20	1,5000-1,5060
REFRACTIVE INDEX nD25	-
OPTICAL ROTATION (°)	/
BOILING POINT (°C)	-
FLASH POINT (°C)	75
ASSAY (% GC)	> 98
ACID VALUE (mg KOH/g)	1,0 mg KOH/g
SOLUBILITY	INSOLUBLE IN WATER
VAPOUR PRESSURE	NOT DETERMINED
OTHER SOLUBILITIES	1g SOLUBLE IN 3ml 90% ALCOHOL

STABILITY AND STORAGE

KEEP IN TIGHTLY CLOSED CONTAINER IN A COOL AND DRY PLACE, PROTECTED FROM LIGHT. WHEN STORED FOR MORE THAN 12 MONTHS, QUALITY SHOULD BE CHECKED BEFORE USE.

WE BELIEVE THE ABOVE INFORMATION TO BE CORRECT BUT WE DO NOT PRESENT IT AS ALL INCLUSIVE AND AS SUCH SHOULD BE USED AS A GUIDE. IT IS THE SOLE RESPONSIBILITY OF THE RECEIVER OF OUR PRODUCT TO COMPLY WITH EXISTING REGULATIONS AND INSTRUCTIONS. THIS PRODUCT HAS NOT BEEN FILTERED DUE TO TECHNICAL REASONS. WE RECOMMEND NOT TO USE IT UNLESS FILTERED WHEN USED AS A RAW MATERIAL IN FOOD INTENDED FOR FINAL CONSUMERS.