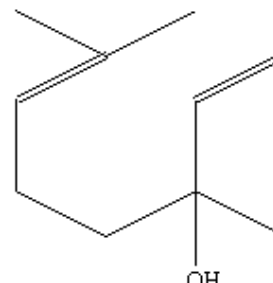


SPECIFICATION SHEET

PRODUCT	LINALOOL NATURAL (EX HO)
APPLICATIONS	Industrial raw material not intended for direct use.
IUPAC NAME	(R)-(-)-3,7-DIMETHYL-1,6-OCTADIEN-3-OL
SYNONYMS	SHIU, R-LINALOOL, L-LINALOOL
PLANT OF ORIGIN	Cinnamomum camphora L.
PART OF THE PLANT	WOOD AND LEAVES
FORMULA	C ₁₀ H ₁₈ O
MOLECULAR WEIGHT	154
CAS	78-70-6
CAS 2	126-91-0
EINECS	201-134-4
EINECS 2	204-811-2
FEMA	2635
TARIFF NUMBER	2905220010



SPECIFICATIONS

VERSION	1	VERSION DATE	19/09/22
----------------	---	---------------------	----------

ASPECT AT 20°C	CLEAR MOBILE LIQUID
COLOUR	COLORLESS TO PALE YELLOW
ODOUR	LIGHT, FRESH, FLORAL-WOODY
DENSITY AT 20°C (g / ml)	0,858–0,863
DENSITY 25/25	-
REFRACTIVE INDEX nD20	1,4600–1,4640
REFRACTIVE INDEX nD25	-
OPTICAL ROTATION (°)	-40/-10
BOILING POINT (°C)	198
MELTING POINT (°C)	-
FLASH POINT (°C)	75
ASSAY (% GC)	L+D-LINALOOL > 98%; D-LINALOOL < 6%
ACID VALUE (mg KOH/g)	-
SOLUBILITY	1:4 v/v ETHANOL 60° - 1,45g/L IN WATER
VAPOUR PRESSURE	0,3 mbar (20°C; 2 mbar (50°C)
OTHER SOLUBILITIES	SOLUBLE IN ETHANOL
OTHER TECHNICAL DATA	PEROXIDES < 20 mmol/l.

STABILITY AND STORAGE

KEEP IN TIGHTLY CLOSED CONTAINER IN A COOL AND DRY PLACE, PROTECTED FROM LIGHT. WHEN STORED FOR MORE THAN 24 MONTHS, QUALITY SHOULD BE CHECKED BEFORE USE.
PURGE HEADSPACE WITH NITROGEN.

WE BELIEVE THE ABOVE INFORMATION TO BE CORRECT BUT WE DO NOT PRESENT IT AS ALL INCLUSIVE AND AS SUCH SHOULD BE USED AS A GUIDE. IT IS THE SOLE RESPONSIBILITY OF THE RECEIVER OF OUR PRODUCT TO COMPLY WITH EXISTING REGULATIONS AND INSTRUCTIONS.
THIS PRODUCT HAS NOT BEEN FILTERED DUE TO TECHNICAL REASONS. WE RECOMMEND NOT TO USE IT UNLESS FILTERED WHEN USED AS A RAW MATERIAL IN FOOD INTENDED FOR FINAL CONSUMERS.