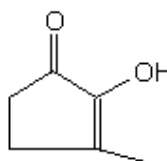


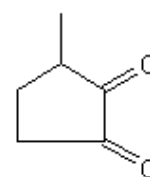
SPECIFICATION SHEET

PRODUCT METHYL CYCLOPENTENOLONE NATURAL EU
APPLICATIONS Industrial raw material not intended for direct use.
IUPAC NAME 2-HYDROXY-3-METHYL-2-CYCLOPENTENONE
SYNONYMS CYCLOTENE, CORYLONE, KETONAROME, MAPLE LACTONE

FORMULA C₆ H₈ O₂
MOLECULAR WEIGHT 112
CAS 80-71-7
CAS 2 765-70-8
EINECS 201-303-2
EINECS 2 212-154-8
FEMA 2700
TARIFF NUMBER 2914409090



ENOL FORM



DIKETONE FORM

SPECIFICATIONS

VERSION 1 **VERSION DATE** 14/10/24

ASPECT AT 20°C CRYSTALLINE POWDER
COLOUR WHITE TO PALE YELLOW OR BEIGE
ODOUR SWEET, NUTS
TASTE SWEET
DENSITY AT 20°C (g / ml) -
DENSITY 25/25 -
REFRACTIVE INDEX nD20 -
REFRACTIVE INDEX nD25 -
OPTICAL ROTATION (°) /
BOILING POINT (°C) ca. 101°C 26,66 hPa
MELTING POINT (°C) 104 - 108
FLASH POINT (°C) 110
ASSAY (% GC) > 95
SOLUBILITY 26,8 g/l WATER
VAPOUR PRESSURE 2,1 hPa (25°C)
OTHER SOLUBILITIES 1 g/ 5 ml ETHANOL 90%

STABILITY AND STORAGE

KEEP IN TIGHTLY CLOSED CONTAINER IN A COOL AND DRY PLACE, PROTECTED FROM LIGHT. WHEN STORED FOR MORE THAN 24 MONTHS, QUALITY SHOULD BE CHECKED BEFORE USE.

WE BELIEVE THE ABOVE INFORMATION TO BE CORRECT BUT WE DO NOT PRESENT IT AS ALL INCLUSIVE AND AS SUCH SHOULD BE USED AS A GUIDE. IT IS THE SOLE RESPONSIBILITY OF THE RECEIVER OF OUR PRODUCT TO COMPLY WITH EXISTING REGULATIONS AND INSTRUCTIONS. THIS PRODUCT HAS NOT BEEN FILTERED DUE TO TECHNICAL REASONS. WE RECOMMEND NOT TO USE IT UNLESS FILTERED WHEN USED AS A RAW MATERIAL IN FOOD INTENDED FOR FINAL CONSUMERS.