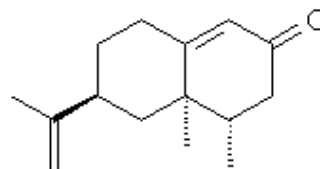


SPECIFICATION SHEET

PRODUCT IUPAC NAME	NATURAL NOOTKATONE 50-60% IFF 5,6-DIMETHYL-8-ISO-PROPENYLBICYCLO-[4.4.0]-1-DECEN-3-ONE
PLANT OF ORIGIN	Citrus sinensis
PART OF THE PLANT	FRUIT
FORMULA	C ₁₅ H ₂₂ O
MOLECULAR WEIGHT	218,34
CAS	4674-50-4
EINECS	225-124-4
FEMA	4941
TARIFF NUMBER	2914290090
KOSHER CERTIFICATE	AVAILABLE ON REQUEST



SPECIFICATIONS

VERSION	1	VERSION DATE	19/09/22
----------------	---	---------------------	----------

ASPECT AT 20°C	CLEAR MOBILE LIQUID/SOLID
COLOUR	YELLOW
ODOUR	GRAPEFRUIT, CITRUS, WOODY
DENSITY AT 20°C (g / ml)	0,960-1,002
DENSITY 25/25	-
REFRACTIVE INDEX nD20	1,5030-1,5220
REFRACTIVE INDEX nD25	-
OPTICAL ROTATION (°)	70/120
BOILING POINT (°C)	140°C (0,5-1,0 mm)
MELTING POINT (°C)	-
FLASH POINT (°C)	110
ASSAY (% GC)	> 50
ACID VALUE (mg KOH/g)	-
SOLUBILITY	INSOLUBLE IN WATER
VAPOUR PRESSURE	NOT DETERMINED
OTHER SOLUBILITIES	SOLUBLE IN ETHANOL

OTHER TECHNICAL DATA DO NOT HEAT ABOVE 50°C.

STABILITY AND STORAGE

KEEP IN TIGHTLY CLOSED CONTAINER IN A COOL AND DRY PLACE, PROTECTED FROM LIGHT. WHEN STORED FOR MORE THAN 24 MONTHS, QUALITY SHOULD BE CHECKED BEFORE USE.

MELT AND MIX BEFORE SAMPLING OR USE. KEEP REFRIGERATED. PURGE HEADSPACE WITH NITROGEN.

WE BELIEVE THE ABOVE INFORMATION TO BE CORRECT BUT WE DO NOT PRESENT IT AS ALL INCLUSIVE AND AS SUCH SHOULD BE USED AS A GUIDE. IT IS THE SOLE RESPONSIBILITY OF THE RECEIVER OF OUR PRODUCT TO COMPLY WITH EXISTING REGULATIONS AND INSTRUCTIONS.

THIS PRODUCT HAS NOT BEEN FILTERED DUE TO TECHNICAL REASONS. WE RECOMMEND NOT TO USE IT UNLESS FILTERED WHEN USED AS A RAW MATERIAL IN FOOD INTENDED FOR FINAL CONSUMERS.