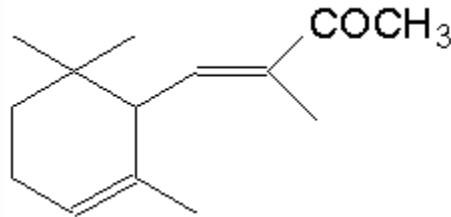


## SPECIFICATION SHEET

**VERSION** 1,00 **VERSION DATE** 07/08/17 **PRINT DATE** 03/10/22

**PRODUCT** METHYLIONONE GAMMA BASF  
**APPLICATIONS** Raw material for industrial use intended for the manufacture of flavours and/or fragrances.  
**IUPAC NAME** 3-BUTEN-2-ONE,3-METHYL-4-(2,6,6-TRIMETHYL-2-CYCLOHEXEN-1-YL)  
**SYNONYMS** ISO-ALPHA-METHYL IONONE

**FORMULA** C14 H22 O  
**MOLECULAR WEIGHT** 206,00  
**CAS** 1335-46-2  
**CAS 2** 127-51-5  
**EINECS** 215-635-0  
**EINECS 2** 204-846-3  
**FEMA** 2714  
**TARIFF NUMBER** 2914230000  
**KOSHER CERTIFICATE** AVAILABLE ON REQUEST



**REACH REGISTRATION NO.** 01-2119471851-35

### SPECIFICATIONS

<b>ASPECT AT 20°C</b>	CLEAR MOBILE LIQUID
<b>COLOUR</b>	PALE YELLOW- YELLOW
<b>ODOUR</b>	WOODY, VIOLET, FLORAL
<b>TASTE</b>	
<b>DENSITY AT 20°C (g / ml)</b>	0,926 - 0,936
<b>DENSITY 25/25</b>	0,926 - 0,931
<b>REFRACTIVE INDEX nD20</b>	1,4980 - 1,5020
<b>REFRACTIVE INDEX nD25</b>	-
<b>OPTICAL ROTATION (°)</b>	/
<b>BOILING POINT (°C)</b>	-
<b>MELTING POINT (°C)</b>	-
<b>FLASH POINT (°C)</b>	126,00
<b>ASSAY (% GC)</b>	ISOMERS SUM > 94%. IONONE ISO-METHYL ALPHA: 60-70%
<b>ACID VALUE (mg KOH/g)</b>	-
<b>SOLUBILITY</b>	INSOLUBLE IN WATER
<b>VAPOUR PRESSURE</b>	NOT DETERMINED
<b>OTHER SOLUBILITIES</b>	SOLUBLE IN ETHANOL

**OTHER TECHNICAL DATA** N-ALPHA ISOMER 20-30%, ISO-BETA ISOMER <6% Y N-BETA ISOMER <10%

### STABILITY AND STORAGE

KEEP IN TIGHTLY CLOSED CONTAINER IN A COOL AND DRY PLACE, PROTECTED FROM LIGHT. WHEN STORED FOR MORE THAN 24 MONTHS, QUALITY SHOULD BE CHECKED BEFORE USE.  
 IT CONTAINS ALPHA-TOCOPHEROL 500 ppm AS ANTIOXIDANT.

WE BELIEVE THE ABOVE INFORMATION TO BE CORRECT BUT WE DO NOT PRESENT IT AS ALL INCLUSIVE AND AS SUCH SHOULD BE USED AS A GUIDE. IT IS THE SOLE RESPONSIBILITY OF THE RECEIVER OF OUR PRODUCT TO COMPLY WITH EXISTING REGULATIONS AND INSTRUCTIONS.

THIS PRODUCT HAS NOT BEEN FILTERED DUE TO TECHNOLOGICAL REASONS. WE RECOMMEND NOT TO USE IT UNLESS FILTERED WHEN USED AS A RAW MATERIAL IN FOOD INTENDED FOR FINAL CONSUMERS.