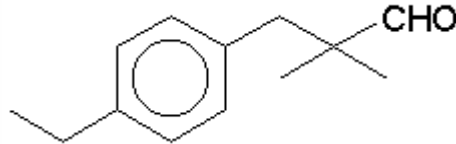


## SPECIFICATION SHEET

**VERSION** 5,00 **VERSION DATE** 07/12/16 **PRINT DATE** 25/06/22

<b>PRODUCT</b>	FLORALOZONE IFF	
<b>APPLICATIONS</b>	Raw material for industrial use intended for the manufacture of flavours and/or fragrances.	
<b>IUPAC NAME</b>	PARA-ETHYL-ALPHA,ALPHA-DIMETHYLHYDROCINNAMALDEHYDE	
<b>SYNONYMS</b>	3-(o-(AND p-)ETHYLPHENYL)-2,2-DIMETHYLPROPIONALDEHYDE	
<b>FORMULA</b>	C13 H18 O	
<b>MOLECULAR WEIGHT</b>	190,10	
<b>CAS</b>	67634-15-5	
<b>CAS 2</b>	67634-14-4	
<b>EINECS</b>	266-819-2	
<b>EINECS 2</b>	266-818-7	
<b>FEMA</b>	-	
<b>TARIFF NUMBER</b>	2912290090	
<b>KOSHER CERTIFICATE</b>	AVAILABLE ON REQUEST	
<b>REACH REGISTRATION NO.</b>	01-2120758796-34	



## SPECIFICATIONS

<b>ASPECT AT 20°C</b>	CLEAR MOBILE LIQUID
<b>COLOUR</b>	COLORLESS TO PALE YELLOW
<b>ODOUR</b>	FLORAL, ALDEHYDIC, FRESH, MARINE.
<b>TASTE</b>	
<b>DENSITY A 20°C (g / ml)</b>	0,951 - 0,958
<b>DENSITY 25/25</b>	0,950 - 0,957
<b>REFRACTIVE INDEX nD20</b>	1,5040 - 1,5080
<b>REFRACTIVE INDEX nD25</b>	-
<b>OPTICAL ROTATION (°)</b>	/
<b>BOILING POINT (°C)</b>	-
<b>MELTING POINT (°C)</b>	
<b>FLASH POINT (°C)</b>	100,00
<b>ASSAY (% GC)</b>	SUM ISOMERS >97 (META <3;ORTHO:20-35;PARA:60-75)
<b>ACID VALUE (mg KOH/g)</b>	< 1
<b>SOLUBILITY</b>	INSOLUBLE IN WATER
<b>VAPOUR PRESSURE</b>	0,0010 calculated (kPa)
<b>OTHER SOLUBILITIES</b>	SOLUBLE IN ETHANOL

**OTHER TECHNICAL DATA** POWERFUL, CLEAN, GREEN, FRESH AIR TONE REMINISCENT OF OCEAN BREEZES. GIVES LIFT TO FRAGRANCES WITHOUT DOMINATING DUE TO ITS NEUTRAL NATURE.

## STABILITY AND STORAGE

KEEP IN TIGHTLY CLOSED CONTAINER IN A COOL AND DRY PLACE, PROTECTED FROM LIGHT. WHEN STORED FOR MORE THAN 24 MONTHS, QUALITY SHOULD BE CHECKED BEFORE USE.

STORAGE TEMPERATURE RECOMMENDED 8-10°C. AWAY FROM SUNLIGHT. PURGE HEADSPACE WITH NITROGEN.

WE BELIEVE THE ABOVE INFORMATION TO BE CORRECT BUT WE DO NOT PRESENT IT AS ALL INCLUSIVE AND AS SUCH SHOULD BE USED AS A GUIDE. IT IS THE SOLE RESPONSIBILITY OF THE RECEIVER OF OUR PRODUCT TO COMPLY WITH EXISTING REGULATIONS AND INSTRUCTIONS.