

SPECIFICATION SHEET

VERSION 1,00 **VERSION DATE** 12/12/12 **PRINT DATE** 20/01/21

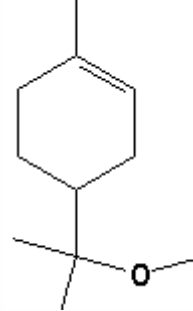
PRODUCT TERPINYL METHYL ETHER
APPLICATIONS Raw material for industrial use intended for the manufacture of fragrances.
IUPAC NAME 4-(1-METHOXY-1-METHYLETHYL)-1-METHYLCYCLOHEXENE
SYNONYMS ORANGE FLOWER ETHER, PARA-MENTH-1-EN-8-YL METHYL ETHER

FORMULA C11 H20 O
MOLECULAR WEIGHT 168,00
CAS 14576-08-0

EINECS 238-620-0

TARIFF NUMBER 2909200090
KOSHER CERTIFICATE AVAILABLE ON REQUEST

REACH REGISTRATION NO. Not available. Substance lawfully placed in the EU market before 1 June 2018.



SPECIFICATIONS

ASPECT AT 20° C	CLEAR MOIBLE LIQUID
COLOUR	COLORLESS
ODOUR	FLORAL, ORANGE BLOSSOM
TASTE	
DENSITY A 20° C (g / ml)	0,898 - 0,904
DENSITY 25/25	-
REFRACTIVE INDEX nD20	1,4630 - 1,4690
REFRACTIVE INDEX nD25	-
OPTICAL ROTATION (°)	/
BOILING POINT (°C)	-
MELTING POINT (°C)	
FLASH POINT (°C)	82,00
ASSAY (% GC)	ALPHA-TERPINYL METHYL ETER > 80
ACID VALUE (mg KOH/g)	-
SOLUBILITY	INSOLUBLE IN WATER
VAPOUR PRESSURE	<1 mmHg at 20°C
OTHER SOLUBILITIES	SOLUBLE 70% IN ETHANOL

OTHER TECHNICAL DATA

STABILITY AND STORAGE

KEEP IN TIGHTLY CLOSED CONTAINER IN A COOL AND DRY PLACE, PROTECTED FROM LIGHT. WHEN STORED FOR MORE THAN 24 MONTHS, QUALITY SHOULD BE CHECKED BEFORE USE.

IT CONTAINS 0,3% OF BHT

WE BELIEVE THE ABOVE INFORMATION TO BE CORRECT BUT WE DO NOT PRESENT IT AS ALL INCLUSIVE AND AS SUCH SHOULD BE USED AS A GUIDE. IT IS THE SOLE RESPONSIBILITY OF THE RECEIVER OF OUR PRODUCT TO COMPLY WITH EXISTING REGULATIONS AND INSTRUCTIONS.