

SPECIFICATION SHEET

VERSION 1,00 **VERSION DATE** 06/07/23 **PRINT DATE** 02/05/24

PRODUCT DAMASCONE BETA NAT EU BESTALLY
APPLICATIONS Industrial raw material not intended for direct use.
IUPAC NAME (2E)-1-(2,6,6-TRIMETHYL-1-CYCLOHEXEN-1-YL)-2-BUTEN-1-ONE
SYNONYMS

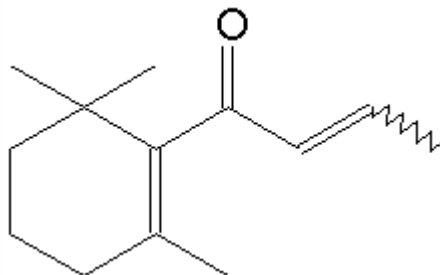
PLANT OF ORIGIN
PART OF THE PLANT

FORMULA C₁₃ H₂₀ O
MOLECULAR WEIGHT 192,00
CAS 23726-91-2

EINECS 245-842-1

FEMA 3243
TARIFF NUMBER 2914290090

FOOD GRADE CERTIFICATE AVAILABLE ON REQUEST
REACH REGISTRATION NO. On request. REACH and non-REACH material available for this product.



SPECIFICATIONS

ASPECT AT 20°C	CLEAR MOIBLE LIQUID	
COLOUR	COLORLESS TO PALE YELLOW	
ODOUR	FRUITY, FLORAL, INTENSE, PLUM, ROSE	
TASTE		
DENSITY AT 20°C (g / ml)	0,932	- 0,940
DENSITY 25/25	0,931	- 0,940
REFRACTIVE INDEX n_{D20}	1,4960	- 1,5000
REFRACTIVE INDEX n_{D25}	-	
OPTICAL ROTATION (°)	/	
BOILING POINT (°C)	CA. 254°C (97 kPa)	
MELTING POINT (°C)	CA. 9°C	
FLASH POINT (°C)	108,00	
ASSAY (% GC)	CIS+TRANS >98%	
ACID VALUE (mg KOH/g)	< 1	
SOLUBILITY	INSOLUBLE IN WATER	
VAPOUR PRESSURE	NOT DETERMINED	
OTHER SOLUBILITIES	SOLUBLE IN ETHANOL 90% 1:10.	

OTHER TECHNICAL DATA

STABILITY AND STORAGE

KEEP IN TIGHTLY CLOSED CONTAINER IN A COOL AND DRY PLACE, PROTECTED FROM LIGHT. WHEN STORED FOR MORE THAN 24 MONTHS, QUALITY SHOULD BE CHECKED BEFORE USE.
KEEP REFRIGERATED AND PURGE HEADSPACE WITH NITROGEN.

WE BELIEVE THE ABOVE INFORMATION TO BE CORRECT BUT WE DO NOT PRESENT IT AS ALL INCLUSIVE AND AS SUCH SHOULD BE USED AS A GUIDE.
IT IS THE SOLE RESPONSIBILITY OF THE RECEIVER OF OUR PRODUCT TO COMPLY WITH EXISTING REGULATIONS AND INSTRUCTIONS.

THIS PRODUCT HAS NOT BEEN FILTERED DUE TO TECHNICAL REASONS. WE RECOMMEND NOT TO USE IT UNLESS FILTERED WHEN USED AS A RAW MATERIAL IN FOOD INTENDED FOR FINAL CONSUMERS.