

## SPECIFICATION SHEET

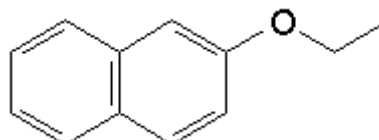
**VERSION** 4,00 **VERSION DATE** 12/06/20 **PRINT DATE** 25/04/24

**PRODUCT** NEROLIN BROMELIA  
**APPLICATIONS** Industrial raw material not intended for direct use.  
**IUPAC NAME** 2-ETHOXYNAPHTHALENE  
**SYNONYMS** BETA-NAPHTYL ETHYL ETHER

**FORMULA** C12 H12 O  
**MOLECULAR WEIGHT** 172,00  
**CAS** 93-18-5

**EINECS** 202-226-7

**FEMA** 2768  
**TARIFF NUMBER** 2909309090



**REACH REGISTRATION NO.** 01-2120176465-49

## SPECIFICATIONS

<b>ASPECT AT 20°C</b>	CRYSTALLINE SOLID
<b>COLOUR</b>	WHITE
<b>ODOUR</b>	MILD, LONG-LASTING, FRUITY, FLOWER
<b>TASTE</b>	SWEET, SUGGEST STRAWBERRY (DILUTED)
<b>DENSITY AT 20°C (g / ml)</b>	-
<b>DENSITY 25/25</b>	-
<b>REFRACTIVE INDEX nD20</b>	-
<b>REFRACTIVE INDEX nD25</b>	-
<b>OPTICAL ROTATION (°)</b>	/
<b>BOILING POINT (°C)</b>	282
<b>MELTING POINT (°C)</b>	35 - 38
<b>FLASH POINT (°C)</b>	101,00
<b>ASSAY (% GC)</b>	> 99
<b>ACID VALUE (mg KOH/g)</b>	-
<b>SOLUBILITY</b>	INSOLUBLE IN WATER. 1:5 IN ETHANOL 95°
<b>VAPOUR PRESSURE</b>	NOT DETERMINED
<b>OTHER SOLUBILITIES</b>	SOLUBLE IN ETHANOL

## OTHER TECHNICAL DATA

## STABILITY AND STORAGE

KEEP IN TIGHTLY CLOSED CONTAINER IN A COOL AND DRY PLACE, PROTECTED FROM LIGHT. WHEN STORED FOR MORE THAN 24 MONTHS, QUALITY SHOULD BE CHECKED BEFORE USE.  
KEEP AWAY FROM HEAT SOURCES TO AVOID PRODUCT MELTING

WE BELIEVE THE ABOVE INFORMATION TO BE CORRECT BUT WE DO NOT PRESENT IT AS ALL INCLUSIVE AND AS SUCH SHOULD BE USED AS A GUIDE.  
IT IS THE SOLE RESPONSIBILITY OF THE RECEIVER OF OUR PRODUCT TO COMPLY WITH EXISTING REGULATIONS AND INSTRUCTIONS.

THIS PRODUCT HAS NOT BEEN FILTERED DUE TO TECHNICAL REASONS. WE RECOMMEND NOT TO USE IT UNLESS FILTERED WHEN USED AS A RAW MATERIAL IN FOOD INTENDED FOR FINAL CONSUMERS.