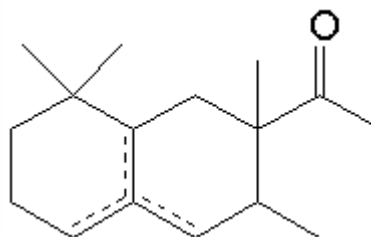


SPECIFICATION SHEET

VERSION	1,00	VERSION DATE	19/09/22	PRINT DATE	02/12/22
PRODUCT	SYLVAMBER				
APPLICATIONS	Industrial raw material not intended for direct use.				
IUPAC NAME	1-(1,2,3,4,5,6,7,8-OCTAHYDRO-2,3,8-TETRAMETHYL-2-NAPHTHALENYL)-ETHAN-1-ONE				
SYNONYMS					
FORMULA	C16 H26 O				
MOLECULAR WEIGHT	234,40				
CAS	54464-57-2				
CAS 2	68155-66-8				
EINECS	259-174-3				
TARIFF NUMBER	2914290090				
KOSHER CERTIFICATE	AVAILABLE ON REQUEST				
REACH REGISTRATION NO.	01-2119489989-04				



SPECIFICATIONS

ASPECT AT 20°C	SLIGHT VISCOUS CLEAR LIQUID	
COLOUR	COLORLESS TO PALE AMBER	
ODOUR	STRONG AMBER, WOODY, CEDARWOOD	
TASTE		
DENSITY AT 20°C (g / ml)	0,962	- 0,970
DENSITY 25/25	0,961	- 0,969
REFRACTIVE INDEX nD20	1,4970	- 1,5020
REFRACTIVE INDEX nD25	1,4970	- 1,5020
OPTICAL ROTATION (°)	/	
BOILING POINT (°C)	290,4°C (typ. anal.)	
MELTING POINT (°C)	-	
FLASH POINT (°C)	134,00	
ASSAY (% GC)	BETA 30-40%; ALPHA 9-15%; GAMMA 18-26%; SECTION>90	
ACID VALUE (mg KOH/g)	< 0,5	
SOLUBILITY	INSOLUBLE IN WATER	
VAPOUR PRESSURE	0,233 Pa	
OTHER SOLUBILITIES	SOLUBLE IN ETHANOL	

OTHER TECHNICAL DATA OTHER CAS: 68155-67-9.

STABILITY AND STORAGE

KEEP IN TIGHTLY CLOSED CONTAINER IN A COOL AND DRY PLACE, PROTECTED FROM LIGHT. WHEN STORED FOR MORE THAN 24 MONTHS, QUALITY SHOULD BE CHECKED BEFORE USE.
STABILIZED WITH 0,1% BHT.

WE BELIEVE THE ABOVE INFORMATION TO BE CORRECT BUT WE DO NOT PRESENT IT AS ALL INCLUSIVE AND AS SUCH SHOULD BE USED AS A GUIDE. IT IS THE SOLE RESPONSIBILITY OF THE RECEIVER OF OUR PRODUCT TO COMPLY WITH EXISTING REGULATIONS AND INSTRUCTIONS.