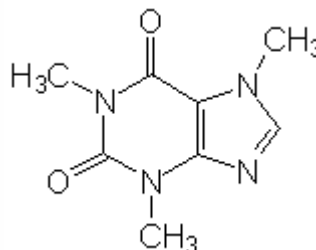


SPECIFICATION SHEET

VERSION	2,00	VERSION DATE	14/12/21	PRINT DATE	25/04/24
PRODUCT	NATURAL CAFFEINE ANHYDROUS				
APPLICATIONS	Industrial raw material not intended for direct use.				
IUPAC NAME	3,7-DIHYDRO-1,3,7-TRIMETHYL-1H-PURINE-2,6-DIONE				
SYNONYMS	1,3,7-TRIMETHYLYXANTHINE, TEINE, GUARANINE				
PLANT OF ORIGIN	Coffea spp				
PART OF THE PLANT					
FORMULA	C8 H10 N4 O2				
MOLECULAR WEIGHT	194,19				
CAS	58-08-2				
EINECS	200-362-1				
FEMA	2224				
TARIFF NUMBER	2939300000				
KOSHER CERTIFICATE	AVAILABLE ON REQUEST				
FOOD GRADE CERTIFICATE	AVAILABLE ON REQUEST				
REACH REGISTRATION NO.	On request. REACH and non-REACH material available for this product.				



SPECIFICATIONS

ASPECT AT 20°C	POWDER
COLOUR	WHITE
ODOUR	NEARLY ODORLESS
TASTE	BITTER
DENSITY AT 20°C (g / ml)	-
DENSITY 25/25	-
REFRACTIVE INDEX nD20	-
REFRACTIVE INDEX nD25	-
OPTICAL ROTATION (°)	/
BOILING POINT (°C)	-
MELTING POINT (°C)	235-237,5
FLASH POINT (°C)	176,00
ASSAY (% GC)	> 98,5
ACID VALUE (mg KOH/g)	-
SOLUBILITY	SOLUBILITY IN WATER: 2,17 g/100 ml (25°C)
VAPOUR PRESSURE	20 hPa (89°C)
OTHER SOLUBILITIES	SLIGHTLY SOLUBLE IN ETHANOL: 1 g IN 75 ml
OTHER TECHNICAL DATA	LOSS ON DRYING: <0,5%

STABILITY AND STORAGE

KEEP IN TIGHTLY CLOSED CONTAINER IN A COOL AND DRY PLACE, PROTECTED FROM LIGHT. WHEN STORED FOR MORE THAN 18 MONTHS, QUALITY SHOULD BE CHECKED BEFORE USE.

WE BELIEVE THE ABOVE INFORMATION TO BE CORRECT BUT WE DO NOT PRESENT IT AS ALL INCLUSIVE AND AS SUCH SHOULD BE USED AS A GUIDE. IT IS THE SOLE RESPONSIBILITY OF THE RECEIVER OF OUR PRODUCT TO COMPLY WITH EXISTING REGULATIONS AND INSTRUCTIONS.

THIS PRODUCT HAS NOT BEEN FILTERED DUE TO TECHNICAL REASONS. WE RECOMMEND NOT TO USE IT UNLESS FILTERED WHEN USED AS A RAW MATERIAL IN FOOD INTENDED FOR FINAL CONSUMERS.