

SPECIFICATION SHEET

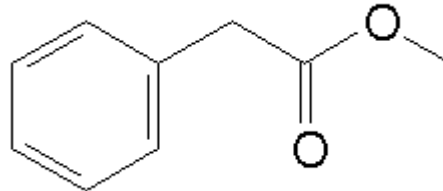
VERSION 5,00 **VERSION DATE** 21/07/10 **PRINT DATE** 03/12/20

PRODUCT METHYL PHENYLACETATE
APPLICATIONS Raw material for industrial use intended for the manufacture of flavours and/or fragrances.
IUPAC NAME METHYL 2-PHENYLACETATE
SYNONYMS METHYL ALPHA-TOLUATE

FORMULA C9 H10 O2
MOLECULAR WEIGHT 150,00
CAS 101-41-7

EINECS 202-940-9

FEMA 2733
TARIFF NUMBER 2916391000



FOOD GRADE CERTIFICATE AVAILABLE ON REQUEST
REACH REGISTRATION NO. 01-2120740957-42

SPECIFICATIONS

ASPECT AT 20° C	CLEAR MOBILE LIQUID
COLOUR	COLORLESS
ODOUR	INTENSE, HONEY, JASMIN
TASTE	SWEET, HONEY-LIKE
DENSITY A 20° C (g / ml)	1,063 - 1,070
DENSITY 25/25	1,061 - 1,067
REFRACTIVE INDEX nD20	1,5040 - 1,5090
REFRACTIVE INDEX nD25	-
OPTICAL ROTATION (°)	/
BOILING POINT (°C)	215
MELTING POINT (°C)	-
FLASH POINT (°C)	85,00
ASSAY (% GC)	> 98
ACID VALUE (mg KOH/g)	< 1
SOLUBILITY	INSOLUBLE IN WATER
VAPOUR PRESSURE	NOT DETERMINED
OTHER SOLUBILITIES	SOLUBLE IN ETHANOL

OTHER TECHNICAL DATA

STABILITY AND STORAGE

KEEP IN TIGHTLY CLOSED CONTAINER IN A COOL AND DRY PLACE, PROTECTED FROM LIGHT. WHEN STORED FOR MORE THAN 24 MONTHS, QUALITY SHOULD BE CHECKED BEFORE USE.

WE BELIEVE THE ABOVE INFORMATION TO BE CORRECT BUT WE DO NOT PRESENT IT AS ALL INCLUSIVE AND AS SUCH SHOULD BE USED AS A GUIDE. IT IS THE SOLE RESPONSIBILITY OF THE RECEIVER OF OUR PRODUCT TO COMPLY WITH EXISTING REGULATIONS AND INSTRUCTIONS.

THIS PRODUCT HAS NOT BEEN FILTERED DUE TO TECHNOLOGICAL REASONS. WE RECOMMEND NOT TO USE IT UNLESS FILTERED WHEN USED AS A RAW MATERIAL IN FOOD INTENDED FOR FINAL CONSUMERS.