

SPECIFICATION SHEET

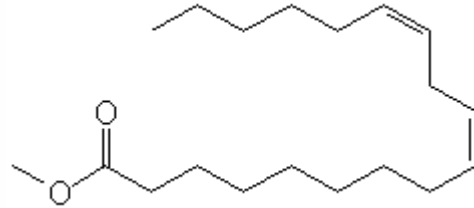
VERSION 1,00 **VERSION DATE** 14/05/13 **PRINT DATE** 30/06/22

PRODUCT METHYL LINOLEATE EXTRA
APPLICATIONS Raw material for industrial use intended for the manufacture of flavours and/or fragrances.
IUPAC NAME METHYL LINOLEATE
SYNONYMS METHYL LINOLEATE, METHYL LINOLATE

FORMULA C19 H34 O2
MOLECULAR WEIGHT 294,48
CAS 112-63-0

EINECS 203-993-0

FEMA 3411
TARIFF NUMBER 2916150000



FOOD GRADE CERTIFICATE AVAILABLE ON REQUEST
REACH REGISTRATION NO. On request. REACH and non-REACH material available for this product.

SPECIFICATIONS

ASPECT AT 20°C CLEAR MOBILE LIQUID
COLOUR COLORLESS TO PALE YELLOW
ODOUR OILY, WOODY
TASTE
DENSITY AT 20°C (g / ml) 0,875 - 0,885
DENSITY 25/25 -
REFRACTIVE INDEX nD20 1,4530 - 1,4600
REFRACTIVE INDEX nD25 -
OPTICAL ROTATION (°) /
BOILING POINT (°C) -
MELTING POINT (°C)
FLASH POINT (°C) 110,00
ASSAY (% GC) METHYL LINOLEATE > 60%
ACID VALUE (mg KOH/g) -
SOLUBILITY INSOLUBLE IN WATER
VAPOUR PRESSURE NOT DETERMINED
OTHER SOLUBILITIES SOLUBLE IN ETHANOL

OTHER TECHNICAL DATA PURGE HEADSPACE WITH NITROGEN.

STABILITY AND STORAGE

KEEP IN TIGHTLY CLOSED CONTAINER IN A COOL AND DRY PLACE, PROTECTED FROM LIGHT. WHEN STORED FOR MORE THAN 24 MONTHS, QUALITY SHOULD BE CHECKED BEFORE USE.
SOLID MATTER CAN APPEAR, OR TURBID PRODUCT WITH COLD. HEAT GENTLY AND/OR FILTER IF NECESSARY.

WE BELIEVE THE ABOVE INFORMATION TO BE CORRECT BUT WE DO NOT PRESENT IT AS ALL INCLUSIVE AND AS SUCH SHOULD BE USED AS A GUIDE. IT IS THE SOLE RESPONSIBILITY OF THE RECEIVER OF OUR PRODUCT TO COMPLY WITH EXISTING REGULATIONS AND INSTRUCTIONS.

THIS PRODUCT HAS NOT BEEN FILTERED DUE TO TECHNOLOGICAL REASONS. WE RECOMMEND NOT TO USE IT UNLESS FILTERED WHEN USED AS A RAW MATERIAL IN FOOD INTENDED FOR FINAL CONSUMERS.