

## SPECIFICATION SHEET

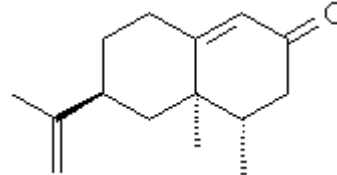
**VERSION** 2,00 **VERSION DATE** 21/04/15 **PRINT DATE** 28/06/22

**PRODUCT** NOOTKATONE 85% IFF  
**APPLICATIONS** Raw material for industrial use intended for the manufacture of flavours and/or fragrances.  
**IUPAC NAME** 5,6-DIMETHYL-8-ISO-PROPENYLBI-CYCLO-[4.4.0]-1-DECEN-3-ONE  
**SYNONYMS**

**FORMULA** C15 H22 O  
**MOLECULAR WEIGHT** 218,34  
**CAS** 4674-50-4

**EINECS** 225-124-4

**FEMA** 3166  
**TARIFF NUMBER** 2914290090  
**KOSHER CERTIFICATE** AVAILABLE ON REQUEST



**REACH REGISTRATION NO.** On request. REACH and non-REACH material available for this product.

## SPECIFICATIONS

|                                 |                            |
|---------------------------------|----------------------------|
| <b>ASPECT AT 20°C</b>           | CLEAR MOBILE LIQUID/SOLID  |
| <b>COLOUR</b>                   | PALE YELLOW TO DARK YELLOW |
| <b>ODOUR</b>                    | GRAPEFRUIT                 |
| <b>TASTE</b>                    |                            |
| <b>DENSITY AT 20°C (g / ml)</b> | 0,995 - 1,015              |
| <b>DENSITY 25/25</b>            | 0,997 - 1,012              |
| <b>REFRACTIVE INDEX nD20</b>    | 1,5150 - 1,5310            |
| <b>REFRACTIVE INDEX nD25</b>    | -                          |
| <b>OPTICAL ROTATION (°)</b>     | 133,00 / 180,00            |
| <b>BOILING POINT (°C)</b>       | 140°C (0,5-1,0 mm)         |
| <b>MELTING POINT (°C)</b>       | -                          |
| <b>FLASH POINT (°C)</b>         | 110,00                     |
| <b>ASSAY (% GC)</b>             | > 85                       |
| <b>ACID VALUE (mg KOH/g)</b>    | -                          |
| <b>SOLUBILITY</b>               | INSOLUBLE IN WATER         |
| <b>VAPOUR PRESSURE</b>          | NOT DETERMINED             |
| <b>OTHER SOLUBILITIES</b>       | SOLUBLE IN ETHANOL         |

**OTHER TECHNICAL DATA** USED FOR GRAPEFRUIT NOTES. IF IT IS NECESSARY TO MELT THE PRODUCT, DO NOT EXCEED 40°C.

## STABILITY AND STORAGE

KEEP IN TIGHTLY CLOSED CONTAINER IN A COOL AND DRY PLACE, PROTECTED FROM LIGHT. WHEN STORED FOR MORE THAN 24 MONTHS, QUALITY SHOULD BE CHECKED BEFORE USE.  
 MELT AND MIX BEFORE SAMPLING OR USE. KEEP REFRIGERATED. PURGE HEADSPACE WITH NITROGEN.

WE BELIEVE THE ABOVE INFORMATION TO BE CORRECT BUT WE DO NOT PRESENT IT AS ALL INCLUSIVE AND AS SUCH SHOULD BE USED AS A GUIDE. IT IS THE SOLE RESPONSIBILITY OF THE RECEIVER OF OUR PRODUCT TO COMPLY WITH EXISTING REGULATIONS AND INSTRUCTIONS.

THIS PRODUCT HAS NOT BEEN FILTERED DUE TO TECHNOLOGICAL REASONS. WE RECOMMEND NOT TO USE IT UNLESS FILTERED WHEN USED AS A RAW MATERIAL IN FOOD INTENDED FOR FINAL CONSUMERS.