

## SPECIFICATION SHEET

**VERSION** 1,00 **VERSION DATE** 12/03/14 **PRINT DATE** 28/06/22

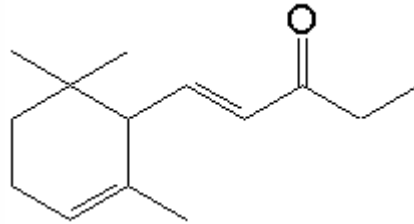
**PRODUCT** METHYL IONONE ALPHA EXTRA BHT IFF  
**APPLICATIONS** Raw material for industrial use intended for the manufacture of flavours and/or fragrances.  
**IUPAC NAME** 1-(2,6,6-TRIMETHYL-2-CYCLOHEXEN-1-YL)PENT-1-EN-3-ONE  
**SYNONYMS**

**FORMULA** C14 H22 O  
**MOLECULAR WEIGHT** 206,20  
**CAS** 7779-30-8

**EINECS** 231-926-5

**TARIFF NUMBER** 2914230000

**REACH REGISTRATION NO.** 01-2120769663-42



### SPECIFICATIONS

<b>ASPECT AT 20°C</b>	CLEAR MOBILE LIQUID
<b>COLOUR</b>	PALE YELLOW
<b>ODOUR</b>	WOODY, VIOLET, FLORAL
<b>TASTE</b>	
<b>DENSITY AT 20°C (g / ml)</b>	0,925 - 0,931
<b>DENSITY 25/25</b>	-
<b>REFRACTIVE INDEX nD20</b>	1,4980 - 1,5020
<b>REFRACTIVE INDEX nD25</b>	-
<b>OPTICAL ROTATION (°)</b>	/
<b>BOILING POINT (°C)</b>	-
<b>MELTING POINT (°C)</b>	-
<b>FLASH POINT (°C)</b>	94,00
<b>ASSAY (% GC)</b>	SUM OF SECTION > 90%. IONONE,N-METHYL ALPHA 65-75%
<b>ACID VALUE (mg KOH/g)</b>	-
<b>SOLUBILITY</b>	INSOLUBLE IN WATER
<b>VAPOUR PRESSURE</b>	0,04 hPa (20°C)
<b>OTHER SOLUBILITIES</b>	SOLUBLE IN ETHANOL

### OTHER TECHNICAL DATA

### STABILITY AND STORAGE

KEEP IN TIGHTLY CLOSED CONTAINER IN A COOL AND DRY PLACE, PROTECTED FROM LIGHT. WHEN STORED FOR MORE THAN 24 MONTHS, QUALITY SHOULD BE CHECKED BEFORE USE.  
 CONTAINS 0,1% BHT

WE BELIEVE THE ABOVE INFORMATION TO BE CORRECT BUT WE DO NOT PRESENT IT AS ALL INCLUSIVE AND AS SUCH SHOULD BE USED AS A GUIDE. IT IS THE SOLE RESPONSIBILITY OF THE RECEIVER OF OUR PRODUCT TO COMPLY WITH EXISTING REGULATIONS AND INSTRUCTIONS.