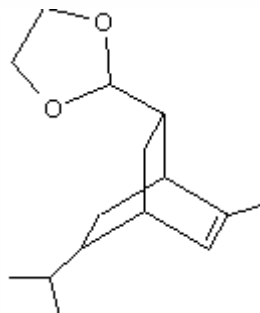


## SPECIFICATION SHEET

**VERSION** 1,00 **VERSION DATE** 19/09/22 **PRINT DATE** 17/04/24

<b>PRODUCT</b>	GLYCOACETAL
<b>APPLICATIONS</b>	Industrial raw material not intended for direct use.
<b>IUPAC NAME</b>	2(6METHYL8(1METHYLETHYL)BICYCLO[2.2.2]OCT5EN2YL)1,3DIOXOLANE
<b>SYNONYMS</b>	GLYCOACETAL 236, GLYCOLIERRAL, IVY DIOXOLANE
<b>FORMULA</b>	C15 H24 O2
<b>MOLECULAR WEIGHT</b>	236,30
<b>CAS</b>	68901-32-6
<b>EINECS</b>	272-669-9
<b>FEMA</b>	-
<b>TARIFF NUMBER</b>	2932990090



**REACH REGISTRATION NO.** 01-2120118326-63

## SPECIFICATIONS

<b>ASPECT AT 20°C</b>	CLEAR MOBILE LIQUID
<b>COLOUR</b>	COLORLESS TO PALE YELLOW
<b>ODOUR</b>	SOFT, ROSY, CRUSHED IVY LEAVES
<b>TASTE</b>	
<b>DENSITY AT 20°C (g / ml)</b>	1,009 - 1,014
<b>DENSITY 25/25</b>	-
<b>REFRACTIVE INDEX nD20</b>	1,4880 - 1,4930
<b>REFRACTIVE INDEX nD25</b>	-
<b>OPTICAL ROTATION (°)</b>	/
<b>BOILING POINT (°C)</b>	-
<b>MELTING POINT (°C)</b>	-
<b>FLASH POINT (°C)</b>	140,00
<b>ASSAY (% GC)</b>	SUM OF ISOMERS > 98
<b>ACID VALUE (mg KOH/g)</b>	-
<b>SOLUBILITY</b>	INSOLUBLE IN WATER
<b>VAPOUR PRESSURE</b>	NOT DETERMINED
<b>OTHER SOLUBILITIES</b>	SOLUBLE IN ETHANOL

## OTHER TECHNICAL DATA

IT HAS NOT BEEN REPORTED FOUND IN NATURE. IN PERFUMERY, THANKS TO ITS TENACITY, IT IS USED IN FRESH AND WOODY COMPOSITIONS. IT ALSO BLENDS WELL WITH LEMON NOTES.

## STABILITY AND STORAGE

KEEP IN TIGHTLY CLOSED CONTAINER IN A COOL AND DRY PLACE, PROTECTED FROM LIGHT. WHEN STORED FOR MORE THAN 24 MONTHS, QUALITY SHOULD BE CHECKED BEFORE USE.

WE BELIEVE THE ABOVE INFORMATION TO BE CORRECT BUT WE DO NOT PRESENT IT AS ALL INCLUSIVE AND AS SUCH SHOULD BE USED AS A GUIDE. IT IS THE SOLE RESPONSIBILITY OF THE RECEIVER OF OUR PRODUCT TO COMPLY WITH EXISTING REGULATIONS AND INSTRUCTIONS.