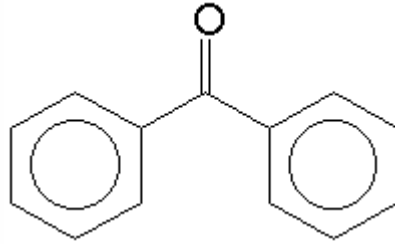


SPECIFICATION SHEET

VERSION 4,00 **VERSION DATE** 05/12/06 **PRINT DATE** 25/06/22

PRODUCT	BENZOPHENONE CRYST.
APPLICATIONS	Raw material for industrial use intended for the manufacture of flavours and/or fragrances.
IUPAC NAME	METHANONE, DIPHENYL-
SYNONYMS	DIFENIL METANONA/BENZOYLBENZENE/PHENYLKETONE
FORMULA	C13 H10 O
MOLECULAR WEIGHT	182,00
CAS	119-61-9
EINECS	204-337-6
FEMA	2134
TARIFF NUMBER	2914390030
FOOD GRADE CERTIFICATE	AVAILABLE ON REQUEST
REACH REGISTRATION NO.	01-2119488052-40



SPECIFICATIONS

ASPECT AT 20°C	CRYSTALLINE SOLID (POWDER)
COLOUR	WHITE TO PALE YELLOW
ODOUR	SWEET, ROSY, SLIGHTLY HERBAL
TASTE	SLIGHTLY CITRIC, FRUITY
DENSITY A 20°C (g / ml)	-
DENSITY 25/25	-
REFRACTIVE INDEX nD20	-
REFRACTIVE INDEX nD25	-
OPTICAL ROTATION (°)	/
BOILING POINT (°C)	306
MELTING POINT (°C)	47
FLASH POINT (°C)	145,00
ASSAY (% GC)	> 99,5
ACID VALUE (mg KOH/g)	-
SOLUBILITY	INSOLUBLE IN WATER
VAPOUR PRESSURE	< 0,1 mbar to 20°C
OTHER SOLUBILITIES	SOLUBLE IN ETHANOL

OTHER TECHNICAL DATA

STABILITY AND STORAGE

KEEP IN TIGHTLY CLOSED CONTAINER IN A COOL AND DRY PLACE, PROTECTED FROM LIGHT. WHEN STORED FOR MORE THAN 24 MONTHS, QUALITY SHOULD BE CHECKED BEFORE USE.

WE BELIEVE THE ABOVE INFORMATION TO BE CORRECT BUT WE DO NOT PRESENT IT AS ALL INCLUSIVE AND AS SUCH SHOULD BE USED AS A GUIDE. IT IS THE SOLE RESPONSIBILITY OF THE RECEIVER OF OUR PRODUCT TO COMPLY WITH EXISTING REGULATIONS AND INSTRUCTIONS.

THIS PRODUCT HAS NOT BEEN FILTERED DUE TO TECHNOLOGICAL REASONS. WE RECOMMEND NOT TO USE IT UNLESS FILTERED WHEN USED AS A RAW MATERIAL IN FOOD INTENDED FOR FINAL CONSUMERS.