

## SPECIFICATION SHEET

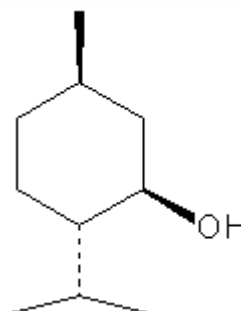
**VERSION** 2,00 **VERSION DATE** 19/09/22 **PRINT DATE** 25/04/24

**PRODUCT** MENTHOL-L BASF SOLID MASS  
**APPLICATIONS** Industrial raw material not intended for direct use.  
**IUPAC NAME** 5-METHYL-2-ISOPROPYL CYCLOHEXANOL  
**SYNONYMS** P-MENTHAN-3-OL, L-MENTHOL

**FORMULA** C10 H20 O  
**MOLECULAR WEIGHT** 156,30  
**CAS** 2216-51-5  
**CAS 2** 89-78-1  
**EINECS** 218-690-9

**FEMA** 2665  
**TARIFF NUMBER** 2906110000

**FOOD GRADE CERTIFICATE** AVAILABLE ON REQUEST  
**REACH REGISTRATION NO.** 01-2119456815-30



## SPECIFICATIONS

<b>ASPECT AT 20°C</b>	SOLID MASS
<b>COLOUR</b>	WHITE
<b>ODOUR</b>	MINTY, FRESH
<b>TASTE</b>	COOL, FRESH, PEPPERMINT
<b>DENSITY AT 20°C (g / ml)</b>	-
<b>DENSITY 25/25</b>	-
<b>REFRACTIVE INDEX nD20</b>	-
<b>REFRACTIVE INDEX nD25</b>	-
<b>OPTICAL ROTATION (°)</b>	-51,00 / -45,00
<b>BOILING POINT (°C)</b>	216°C (1013 mbar)
<b>MELTING POINT (°C)</b>	41 - 44
<b>FLASH POINT (°C)</b>	96,00
<b>ASSAY (% GC)</b>	> 99,7
<b>ACID VALUE (mg KOH/g)</b>	-
<b>SOLUBILITY</b>	SLIGHTLY SOLUBLE IN WATER (APPROX. 0,05% 20°C)
<b>VAPOUR PRESSURE</b>	0,085 hPa (25°C)
<b>OTHER SOLUBILITIES</b>	SOLUBLE IN ETHANOL

**OTHER TECHNICAL DATA** Rotation value is the specific rotation

## STABILITY AND STORAGE

KEEP IN TIGHTLY CLOSED CONTAINER IN A COOL AND DRY PLACE, PROTECTED FROM LIGHT. WHEN STORED FOR MORE THAN 24 MONTHS, QUALITY SHOULD BE CHECKED BEFORE USE.  
ASSURE COMPLETE MELTING BEFORE USE.

WE BELIEVE THE ABOVE INFORMATION TO BE CORRECT BUT WE DO NOT PRESENT IT AS ALL INCLUSIVE AND AS SUCH SHOULD BE USED AS A GUIDE.  
IT IS THE SOLE RESPONSIBILITY OF THE RECEIVER OF OUR PRODUCT TO COMPLY WITH EXISTING REGULATIONS AND INSTRUCTIONS.

THIS PRODUCT HAS NOT BEEN FILTERED DUE TO TECHNOLOGICAL REASONS. WE RECOMMEND NOT TO USE IT UNLESS FILTERED WHEN USED AS A RAW MATERIAL IN FOOD INTENDED FOR FINAL CONSUMERS.