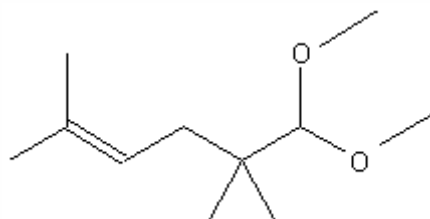


## SPECIFICATION SHEET

<b>VERSION</b>	4,00	<b>VERSION DATE</b>	17/11/22	<b>PRINT DATE</b>	17/04/24
<b>PRODUCT</b>	METHYL PAMPLEMOUSSE				
<b>APPLICATIONS</b>	Industrial raw material not intended for direct use.				
<b>IUPAC NAME</b>	1,1-DIMETHOXY-2,2,5-TRIMETHYL-4-HEXENE				
<b>SYNONYMS</b>	METHYL PAMPLEMOUSSE, AMAROCIT, PAMPLEROM, POMELOCIT, GRAPEFRUIT ACETAL				
<b>FORMULA</b>	C11 H22 O2				
<b>MOLECULAR WEIGHT</b>	186,00				
<b>CAS</b>	67674-46-8				
<b>EINECS</b>	266-885-2				
<b>TARIFF NUMBER</b>	2911000000				
<b>REACH REGISTRATION NO.</b>	01-2120741268-52				



## SPECIFICATIONS

<b>ASPECT AT 20°C</b>	CLEAR MOBILE LIQUID	
<b>COLOUR</b>	COLORLESS TO PALE YELLOW	
<b>ODOUR</b>	FRESH, CITRUS, GRAPEFRUIT PEEL-LIKE	
<b>TASTE</b>		
<b>DENSITY AT 20°C (g / ml)</b>	0,875	- 0,885
<b>DENSITY 25/25</b>		-
<b>REFRACTIVE INDEX nD20</b>	1,4350	- 1,4450
<b>REFRACTIVE INDEX nD25</b>		-
<b>OPTICAL ROTATION (°)</b>		/
<b>BOILING POINT (°C)</b>	195 (976 hPa)	
<b>MELTING POINT (°C)</b>	-70	
<b>FLASH POINT (°C)</b>	75,00	
<b>ASSAY (% GC)</b>	SUM OF TWO ISOMERS > 97	
<b>ACID VALUE (mg KOH/g)</b>	< 1	
<b>SOLUBILITY</b>	SOLUBILITY IN WATER: 0,42 g/L	
<b>VAPOUR PRESSURE</b>	0,46 hPa (20°C)	
<b>OTHER SOLUBILITIES</b>	SOLUBLE IN ETHANOL	

**OTHER TECHNICAL DATA** THIS SUBSTANCE DOES NOT SEEM TO OCCUR IN NATURE.

## STABILITY AND STORAGE

KEEP IN TIGHTLY CLOSED CONTAINER IN A COOL AND DRY PLACE, PROTECTED FROM LIGHT. WHEN STORED FOR MORE THAN 24 MONTHS, QUALITY SHOULD BE CHECKED BEFORE USE.  
IT MAY CONTAIN 0,05% OF ALPHA-TOCOPHEROL.

WE BELIEVE THE ABOVE INFORMATION TO BE CORRECT BUT WE DO NOT PRESENT IT AS ALL INCLUSIVE AND AS SUCH SHOULD BE USED AS A GUIDE.  
IT IS THE SOLE RESPONSIBILITY OF THE RECEIVER OF OUR PRODUCT TO COMPLY WITH EXISTING REGULATIONS AND INSTRUCTIONS.