

## SPECIFICATION SHEET

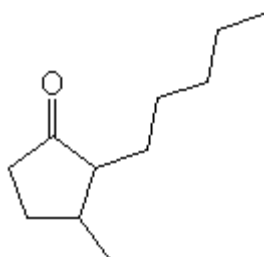
**VERSION** 2,00 **VERSION DATE** 15/02/21 **PRINT DATE** 03/12/24

**PRODUCT** TETRAHYDROJASMONE SYNAROME  
**APPLICATIONS** Industrial raw material not intended for direct use.  
**IUPAC NAME** 3-METHYL-2-PENTYL-CYCLOPENTANONE  
**SYNONYMS**

**FORMULA** C11 H20 O  
**MOLECULAR WEIGHT** 168,28  
**CAS** 13074-63-0

**EINECS** 235-969-0

**FEMA** -  
**TARIFF NUMBER** 2914290090



**REACH REGISTRATION NO.** Exempt from registration (imported/manufactured < 1 ton/year)

### SPECIFICATIONS

<b>ASPECT AT 20°C</b>	CLEAR MOBILE LIQUID
<b>COLOUR</b>	COLORLESS TO PALE YELLOW
<b>ODOUR</b>	FLORAL,JASMIN,CELERY,FRUITY,GREEN
<b>TASTE</b>	
<b>DENSITY AT 20°C (g / ml)</b>	0,873 - 0,888
<b>DENSITY 25/25</b>	-
<b>REFRACTIVE INDEX nD20</b>	1,4465 - 1,4505
<b>REFRACTIVE INDEX nD25</b>	-
<b>OPTICAL ROTATION (°)</b>	/
<b>BOILING POINT (°C)</b>	-
<b>MELTING POINT (°C)</b>	-
<b>FLASH POINT (°C)</b>	74,00
<b>ASSAY (% GC)</b>	SUMA OF 5 ISOMERS > 95% (NON POLAR COLUMN)
<b>ACID VALUE (mg KOH/g)</b>	
<b>SOLUBILITY</b>	SLIGHTLY SOLUBLE IN WATER
<b>VAPOUR PRESSURE</b>	NOT DETERMINED
<b>OTHER SOLUBILITIES</b>	SOLUBLE IN ETHANOL

**OTHER TECHNICAL DATA** RICH FLORAL JASMIN CHARACTER, WITH A DISTINCTIVE FRUITY AND CELERY NOTE. THE UNDERTONE IS SLIGHTLY GREEN, ANISED AND WOODY. AT LOW CONCENTRATIONS IT GIVES BODY AND DIFFUSION INTO FLORAL, FRUITY, CHYPRE AND WOODY COMPOUNDS.

### STABILITY AND STORAGE

KEEP IN TIGHTLY CLOSED CONTAINER IN A COOL AND DRY PLACE, PROTECTED FROM LIGHT. WHEN STORED FOR MORE THAN 24 MONTHS, QUALITY SHOULD BE CHECKED BEFORE USE.

WE BELIEVE THE ABOVE INFORMATION TO BE CORRECT BUT WE DO NOT PRESENT IT AS ALL INCLUSIVE AND AS SUCH SHOULD BE USED AS A GUIDE. IT IS THE SOLE RESPONSIBILITY OF THE RECEIVER OF OUR PRODUCT TO COMPLY WITH EXISTING REGULATIONS AND INSTRUCTIONS.