

## SPECIFICATION SHEET

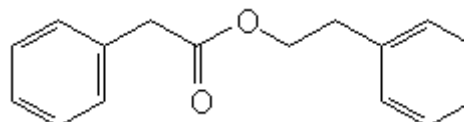
**VERSION** 2,00 **VERSION DATE** 16/01/22 **PRINT DATE** 23/04/24

**PRODUCT** PHENYL ETHYL PHENYLACETATE IFF  
**APPLICATIONS** Industrial raw material not intended for direct use.  
**IUPAC NAME** PHENETYL PHENYLACETATE  
**SYNONYMS** 2-PHENYLETHYL ALPHA-TOLUATE

**FORMULA** C16 H16 O2  
**MOLECULAR WEIGHT** 240,00  
**CAS** 102-20-5

**EINECS** 203-013-1

**FEMA** 2866  
**TARIFF NUMBER** 2916391000



**REACH REGISTRATION NO.** Not available. Substance lawfully placed in the EU market before 1 June 2018.

## SPECIFICATIONS

<b>ASPECT AT 20°C</b>	CLEAR MOBILE LIQUID/WHITE CRYSTALS	
<b>COLOUR</b>	COLORLESS TO PALE YELLOW	
<b>ODOUR</b>	HEAVY, SWEET, FLORAL, BALSAMIC	
<b>TASTE</b>		
<b>DENSITY AT 20°C (g / ml)</b>	1,078	- 1,086
<b>DENSITY 25/25</b>		-
<b>REFRACTIVE INDEX nD20</b>	1,5470	- 1,5520
<b>REFRACTIVE INDEX nD25</b>		-
<b>OPTICAL ROTATION (°)</b>		/
<b>BOILING POINT (°C)</b>	325°C (760 mmHg)	
<b>MELTING POINT (°C)</b>	28°C	
<b>FLASH POINT (°C)</b>	93,00	
<b>ASSAY (% GC)</b>	> 98	
<b>ACID VALUE (mg KOH/g)</b>	< 1	
<b>SOLUBILITY</b>	INSOLUBLE IN WATER	
<b>VAPOUR PRESSURE</b>	NOT DETERMINED	
<b>OTHER SOLUBILITIES</b>	SOLUBLE IN ETHANOL	

## OTHER TECHNICAL DATA

## STABILITY AND STORAGE

KEEP IN TIGHTLY CLOSED CONTAINER IN A COOL AND DRY PLACE, PROTECTED FROM LIGHT. WHEN STORED FOR MORE THAN 24 MONTHS, QUALITY SHOULD BE CHECKED BEFORE USE.

WE BELIEVE THE ABOVE INFORMATION TO BE CORRECT BUT WE DO NOT PRESENT IT AS ALL INCLUSIVE AND AS SUCH SHOULD BE USED AS A GUIDE. IT IS THE SOLE RESPONSIBILITY OF THE RECEIVER OF OUR PRODUCT TO COMPLY WITH EXISTING REGULATIONS AND INSTRUCTIONS.