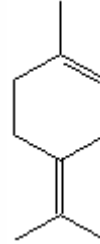


SPECIFICATION SHEET

VERSION	1,00	VERSION DATE	23/04/14	PRINT DATE	23/01/22
PRODUCT	TERPINOLENE NATURAL BESTALLY				
APPLICATIONS	Raw material for industrial use intended for the manufacture of flavours and/or fragrances.				
IUPAC NAME	P-MENTH-1,4(8)-DIENE				
SYNONYMS	ALPHA-TERPINOLENE;1-METHYL-4-ISOPROPYLIDENE-1-CYCLOHEXENE				
PLANT OF ORIGIN	Pinus massoniana Lamb.				
PART OF THE PLANT					
FORMULA	C10 H16				
MOLECULAR WEIGHT	136,00				
CAS	586-62-9				
EINECS	209-578-0				
FEMA	3046				
TARIFF NUMBER	2902190000				
KOSHER CERTIFICATE	AVAILABLE ON REQUEST				
FOOD GRADE CERTIFICATE	AVAILABLE ON REQUEST				
REACH REGISTRATION NO.	On request. REACH and non-REACH material available for this product.				



SPECIFICATIONS

ASPECT AT 20°C	CLEAR MOBILE LIQUID	
COLOUR	COLORLESS TO PALE YELLOW	
ODOUR	SWEET, PINE	
TASTE		
DENSITY A 20°C (g / ml)	0,855	- 0,863
DENSITY 25/25	-	
REFRACTIVE INDEX nD20	1,4840	- 1,4900
REFRACTIVE INDEX nD25	-	
OPTICAL ROTATION (°)	/	
BOILING POINT (°C)	183 - 185	
MELTING POINT (°C)	-	
FLASH POINT (°C)	60,00	
ASSAY (% GC)	> 95	
ACID VALUE (mg KOH/g)	-	
SOLUBILITY	INSOLUBLE IN WATER	
VAPOUR PRESSURE	0,7 hPA (20°C)	
OTHER SOLUBILITIES	SOLUBLE IN ETHANOL	

OTHER TECHNICAL DATA

STABILITY AND STORAGE

KEEP IN TIGHTLY CLOSED CONTAINER IN A COOL AND DRY PLACE, PROTECTED FROM LIGHT. WHEN STORED FOR MORE THAN 24 MONTHS, QUALITY SHOULD BE CHECKED BEFORE USE.
PURGE HEADSPACE WITH NITROGEN.

WE BELIEVE THE ABOVE INFORMATION TO BE CORRECT BUT WE DO NOT PRESENT IT AS ALL INCLUSIVE AND AS SUCH SHOULD BE USED AS A GUIDE. IT IS THE SOLE RESPONSIBILITY OF THE RECEIVER OF OUR PRODUCT TO COMPLY WITH EXISTING REGULATIONS AND INSTRUCTIONS.

THIS PRODUCT HAS NOT BEEN FILTERED DUE TO TECHNOLOGICAL REASONS. WE RECOMMEND NOT TO USE IT UNLESS FILTERED WHEN USED AS A RAW MATERIAL IN FOOD INTENDED FOR FINAL CONSUMERS.