

SPECIFICATION SHEET

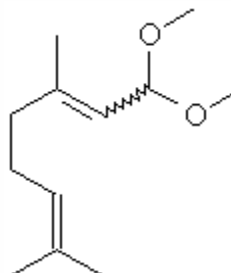
VERSION 4,00 **VERSION DATE** 19/09/22 **PRINT DATE** 24/04/24

PRODUCT CITRAL DIMETHYL ACETAL IFF
APPLICATIONS Industrial raw material not intended for direct use.
IUPAC NAME 1,1-DIMETHOXY-3,7-DIMETHYL-2,6-OCTADIENE
SYNONYMS 3,7-DIMETHYL-2,6-OCTADIENAL DIMETHYL ACETAL

FORMULA C12 H22 O2
MOLECULAR WEIGHT 198,00
CAS 7549-37-3

EINECS 231-434-0

FEMA 2305
TARIFF NUMBER 2911000000



REACH REGISTRATION NO. Exempt from registration (imported/manufactured < 1 ton/year)

SPECIFICATIONS

ASPECT AT 20°C	CLEAR MOBILE LIQUID
COLOUR	COLORLESS TO PALE YELLOW
ODOUR	CITRIC, LEMON, EARTHY
TASTE	
DENSITY AT 20°C (g / ml)	0,886 - 0,894
DENSITY 25/25	0,885 - 0,893
REFRACTIVE INDEX nD20	1,4540 - 1,4620
REFRACTIVE INDEX nD25	-
OPTICAL ROTATION (°)	/
BOILING POINT (°C)	-
MELTING POINT (°C)	-
FLASH POINT (°C)	82,00
ASSAY (% GC)	NERAL DMA:25-40%; GERANIAL DMA:55-70%; SUM > 93%
ACID VALUE (mg KOH/g)	-
SOLUBILITY	INSOLUBLE IN WATER
VAPOUR PRESSURE	0,0266645 hPa (calculated)
OTHER SOLUBILITIES	SOLUBLE IN ETHANOL

OTHER TECHNICAL DATA

STABILITY AND STORAGE

KEEP IN TIGHTLY CLOSED CONTAINER IN A COOL AND DRY PLACE, PROTECTED FROM LIGHT. WHEN STORED FOR MORE THAN 24 MONTHS, QUALITY SHOULD BE CHECKED BEFORE USE.
 PURGE HEADSPACE WITH NITROGEN.

WE BELIEVE THE ABOVE INFORMATION TO BE CORRECT BUT WE DO NOT PRESENT IT AS ALL INCLUSIVE AND AS SUCH SHOULD BE USED AS A GUIDE.
 IT IS THE SOLE RESPONSIBILITY OF THE RECEIVER OF OUR PRODUCT TO COMPLY WITH EXISTING REGULATIONS AND INSTRUCTIONS.