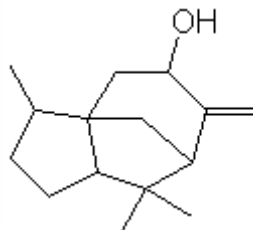


SPECIFICATION SHEET

VERSION	2,00	VERSION DATE	19/09/22	PRINT DATE	25/04/24
PRODUCT	CEDROL TEXAS IFF NATURAL				
APPLICATIONS	Industrial raw material not intended for direct use.				
IUPAC NAME	CEDROL				
SYNONYMS					
PLANT OF ORIGIN					
PART OF THE PLANT					
FORMULA	C ₁₆ H ₂₈ O				
MOLECULAR WEIGHT	236,40				
CAS	77-53-2				
EINECS	201-035-6				
FEMA	-				
TARIFF NUMBER	2906190090				



REACH REGISTRATION NO. 01-2120790208-49

SPECIFICATIONS

ASPECT AT 20°C	CLEAR MOBILE LIQUID/CRYSTALLINE SOLID	
COLOUR	COLORLESS TO PALE YELLOW	
ODOUR	WOODY, CEDAR, DRY	
TASTE		
DENSITY AT 20°C (g / ml)	-	
DENSITY 25/25	-	
REFRACTIVE INDEX n_D20	1,5080	- 1,5140
REFRACTIVE INDEX n_D25	-	
OPTICAL ROTATION (°)	/	
BOILING POINT (°C)	-	
MELTING POINT (°C)	79°C	
FLASH POINT (°C)	81,00	
ASSAY (% GC)	SUM:73-85;CEDROL:60-75;WIDDROL:6-13	
ACID VALUE (mg KOH/g)	-	
SOLUBILITY	INSOLUBLE IN WATER	
VAPOUR PRESSURE	0,0006666 hPa (calculated)	
OTHER SOLUBILITIES	SOLUBLE IN ETHANOL	

OTHER TECHNICAL DATA

STABILITY AND STORAGE

KEEP IN TIGHTLY CLOSED CONTAINER IN A COOL AND DRY PLACE, PROTECTED FROM LIGHT. WHEN STORED FOR MORE THAN 24 MONTHS, QUALITY SHOULD BE CHECKED BEFORE USE.
ASSURE COMPLETE MELTING BEFORE USE.

WE BELIEVE THE ABOVE INFORMATION TO BE CORRECT BUT WE DO NOT PRESENT IT AS ALL INCLUSIVE AND AS SUCH SHOULD BE USED AS A GUIDE.
IT IS THE SOLE RESPONSIBILITY OF THE RECEIVER OF OUR PRODUCT TO COMPLY WITH EXISTING REGULATIONS AND INSTRUCTIONS.