

SPECIFICATION SHEET

VERSION 2,00 **VERSION DATE** 19/09/22 **PRINT DATE** 20/05/24

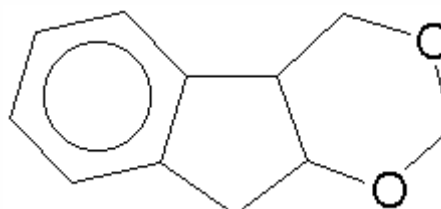
PRODUCT INDOLAROME
APPLICATIONS Industrial raw material not intended for direct use.
IUPAC NAME INDENE-M-DIOXINTETRAHYDRO
SYNONYMS FLORINDAL, INDOLAL, INDOFLOR CRIST, INDOLETAL

FORMULA C11 H12 O2
MOLECULAR WEIGHT 176,00
CAS 18096-62-3

EINECS 241-997-4

TARIFF NUMBER 2932990090
KOSHER CERTIFICATE AVAILABLE ON REQUEST

REACH REGISTRATION NO. 01-2120760170-66



SPECIFICATIONS

ASPECT AT 20°C	CRYSTALLINE SOLID OR AGGLUTINANT POWDER
COLOUR	WHITE
ODOUR	FLORAL, INDOLE-LIKE
TASTE	
DENSITY AT 20°C (g / ml)	-
DENSITY 25/25	-
REFRACTIVE INDEX nD20	-
REFRACTIVE INDEX nD25	-
OPTICAL ROTATION (°)	/
BOILING POINT (°C)	276,1
MELTING POINT (°C)	> 35
FLASH POINT (°C)	110,00
ASSAY (% GC)	> 97
ACID VALUE (mg KOH/g)	-
SOLUBILITY	INSOLUBLE IN WATER
VAPOUR PRESSURE	NOT DETERMINED
OTHER SOLUBILITIES	SOLUBLE IN ETHANOL

OTHER TECHNICAL DATA

STABILITY AND STORAGE

KEEP IN TIGHTLY CLOSED CONTAINER IN A COOL AND DRY PLACE, PROTECTED FROM LIGHT. WHEN STORED FOR MORE THAN 24 MONTHS, QUALITY SHOULD BE CHECKED BEFORE USE.

WE BELIEVE THE ABOVE INFORMATION TO BE CORRECT BUT WE DO NOT PRESENT IT AS ALL INCLUSIVE AND AS SUCH SHOULD BE USED AS A GUIDE. IT IS THE SOLE RESPONSIBILITY OF THE RECEIVER OF OUR PRODUCT TO COMPLY WITH EXISTING REGULATIONS AND INSTRUCTIONS.