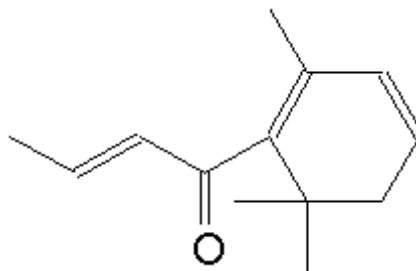


SPECIFICATION SHEET

| VERSION | 1,00 | VERSION DATE | 21/12/23 | PRINT DATE | 04/05/24 |
|-------------------------------|--|--------------|----------|------------|----------|
| PRODUCT | DAMASCENONE 97% | | | | |
| APPLICATIONS | Industrial raw material not intended for direct use. | | | | |
| IUPAC NAME | 2-BUTEN-1-ONE,1-(2,6,6-TRIMETHYL-1,3-CYCLOHEXADIEN-1-YL)- | | | | |
| SYNONYMS | BETA-DAMASCENONE, 1-(2,6,6-TRIMETHYL-1,3-CYCLOHEXADIENYL)-2-BUTENONE | | | | |
| FORMULA | C13 H18 O | | | | |
| MOLECULAR WEIGHT | 190,00 | | | | |
| CAS | 23696-85-7 | | | | |
| CAS 2 | 23726-93-4 | | | | |
| EINECS | 245-833-2 | | | | |
| EINECS 2 | 245-844-2 | | | | |
| FEMA | 3420 | | | | |
| TARIFF NUMBER | 2914290090 | | | | |
| FOOD GRADE CERTIFICATE | AVAILABLE ON REQUEST | | | | |
| REACH REGISTRATION NO. | Exempt from registration (imported/manufactured < 1 ton/year) | | | | |



SPECIFICATIONS

| | | |
|---------------------------------|----------------------------------|----------|
| ASPECT AT 20°C | CLEAR MOBILE LIQUID | |
| COLOUR | PALE YELLOW TO YELLOW | |
| ODOUR | FLORAL,FRUITY,ROSE,PLUM,TOBACCO | |
| TASTE | FLORAL,FRUITY,QUINCE,ROSY,COOKED | |
| DENSITY AT 20°C (g / ml) | 0,944 | - 0,954 |
| DENSITY 25/25 | 0,943 | - 0,953 |
| REFRACTIVE INDEX nD20 | 1,5090 | - 1,5150 |
| REFRACTIVE INDEX nD25 | - | |
| OPTICAL ROTATION (°) | / | |
| BOILING POINT (°C) | 199°C (101325 Pa) | |
| MELTING POINT (°C) | ca. 1,8°C | |
| FLASH POINT (°C) | 110,00 | |
| ASSAY (% GC) | > 97 | |
| ACID VALUE (mg KOH/g) | < 1 | |
| SOLUBILITY | SOLUBLE IN WATER 188 mg/l (20°C) | |
| VAPOUR PRESSURE | 3 Pa (25°C) | |
| OTHER SOLUBILITIES | SOLUBLE IN ETHANOL | |

OTHER TECHNICAL DATA

STABILITY AND STORAGE

KEEP IN TIGHTLY CLOSED CONTAINER IN A COOL AND DRY PLACE, PROTECTED FROM LIGHT. WHEN STORED FOR MORE THAN 36 MONTHS, QUALITY SHOULD BE CHECKED BEFORE USE.
IT CONTAINS 0,05% OF ALPHA-TOCOPHEROL (E-307) AS STABILIZER.

WE BELIEVE THE ABOVE INFORMATION TO BE CORRECT BUT WE DO NOT PRESENT IT AS ALL INCLUSIVE AND AS SUCH SHOULD BE USED AS A GUIDE.
IT IS THE SOLE RESPONSIBILITY OF THE RECEIVER OF OUR PRODUCT TO COMPLY WITH EXISTING REGULATIONS AND INSTRUCTIONS.