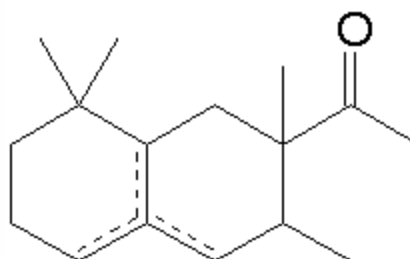


SPECIFICATION SHEET

VERSION 10,00 **VERSION DATE** 12/04/23 **PRINT DATE** 14/05/24

PRODUCT METHYL CYCLOMYRCETONE
APPLICATIONS Industrial raw material not intended for direct use.
IUPAC NAME 7-ACETYL-1,1,8-OCTAHYDRO-1,1,6,7-TETRAMETHYLNAPHTHALENE
SYNONYMS METHYL CYCLOMYRCETONE, ISO E SUPER, AMBOISE, ORBITONE, ISOCYCLEMONE

FORMULA C16 H26 O
MOLECULAR WEIGHT 234,40
CAS 54464-57-2
CAS 2 68155-66-8
EINECS 259-174-3
EINECS 2 268-978-3
FEMA --
TARIFF NUMBER 2914290090



REACH REGISTRATION NO. 01-2119489989-04

SPECIFICATIONS

ASPECT AT 20°C	SLIGHT VISCOUS CLEAR LIQUID	
COLOUR	COLOURLESS TO PALE YELLOW	
ODOUR	WOODY, FLORAL, AMBERGRIS	
TASTE		
DENSITY AT 20°C (g / ml)	0,960	- 0,970
DENSITY 25/25		-
REFRACTIVE INDEX nD20	1,4930	- 1,5010
REFRACTIVE INDEX nD25		-
OPTICAL ROTATION (°)		/
BOILING POINT (°C)	230 at 760 mmHg	
MELTING POINT (°C)	--	
FLASH POINT (°C)	111,00	
ASSAY (% GC)	SUM OF SECTION>85;ALPHA 5-20;BETA 55-70;GAMMA 3-16	
ACID VALUE (mg KOH/g)	< 1	
SOLUBILITY	SOLUBILITY IN WATER: 2,000 at 20 °C	
VAPOUR PRESSURE	0,0027 at 20 °C	
OTHER SOLUBILITIES	SOLUBLE IN ETHANOL	

OTHER TECHNICAL DATA

STABILITY AND STORAGE

KEEP IN TIGHTLY CLOSED CONTAINER IN A COOL AND DRY PLACE, PROTECTED FROM LIGHT. WHEN STORED FOR MORE THAN 24 MONTHS, QUALITY SHOULD BE CHECKED BEFORE USE.
 IT CAN CONTAIN <0,04% OF BHT.

WE BELIEVE THE ABOVE INFORMATION TO BE CORRECT BUT WE DO NOT PRESENT IT AS ALL INCLUSIVE AND AS SUCH SHOULD BE USED AS A GUIDE.
 IT IS THE SOLE RESPONSIBILITY OF THE RECEIVER OF OUR PRODUCT TO COMPLY WITH EXISTING REGULATIONS AND INSTRUCTIONS.