

## SPECIFICATION SHEET

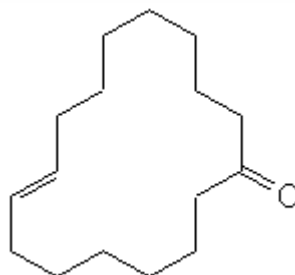
**VERSION** 1,00 **VERSION DATE** 14/04/23 **PRINT DATE** 17/05/24

**PRODUCT** GLOBANONE 50% DPG  
**APPLICATIONS** Industrial raw material not intended for direct use.  
**IUPAC NAME** CYCLOHEXADEC-8-EN-1-ONE, MIXTURE OF ISOMERS  
**SYNONYMS**

**FORMULA**  
**MOLECULAR WEIGHT** 0,00  
**CAS** 3100-36-5

**EINECS** 401-700-2

**TARIFF NUMBER** 3302909000



**REACH REGISTRATION NO.** All the ingredients of the mixture have been registered or they are exempt from registration.

## SPECIFICATIONS

<b>ASPECT AT 20°C</b>	CLEAR MOBILE LIQUID
<b>COLOUR</b>	COLORLESS TO PALE YELLOW
<b>ODOUR</b>	MUSK, DIFFUSIVE, BALSAMIC, TOBACCO
<b>TASTE</b>	
<b>DENSITY AT 20°C (g / ml)</b>	0,960 - 0,980
<b>DENSITY 25/25</b>	-
<b>REFRACTIVE INDEX n<sub>D20</sub></b>	1,4550 - 1,4750
<b>REFRACTIVE INDEX n<sub>D25</sub></b>	-
<b>OPTICAL ROTATION (°)</b>	/
<b>BOILING POINT (°C)</b>	-
<b>MELTING POINT (°C)</b>	-
<b>FLASH POINT (°C)</b>	101,00
<b>ASSAY (% GC)</b>	CONTAINS 50% BY WEIGHT GLOBANONE (CAS 3100-36-5).
<b>ACID VALUE (mg KOH/g)</b>	-
<b>SOLUBILITY</b>	PARTLY SOLUBLE IN WATER
<b>VAPOUR PRESSURE</b>	NOT DETERMINED
<b>OTHER SOLUBILITIES</b>	SOLUBLE IN ETHANOL

**OTHER TECHNICAL DATA** IT CONTAINS 50% OF DIPROPYLENEGLYCOL.

## STABILITY AND STORAGE

KEEP IN TIGHTLY CLOSED CONTAINER IN A COOL AND DRY PLACE, PROTECTED FROM LIGHT. WHEN STORED FOR MORE THAN 24 MONTHS, QUALITY SHOULD BE CHECKED BEFORE USE.

WE BELIEVE THE ABOVE INFORMATION TO BE CORRECT BUT WE DO NOT PRESENT IT AS ALL INCLUSIVE AND AS SUCH SHOULD BE USED AS A GUIDE. IT IS THE SOLE RESPONSIBILITY OF THE RECEIVER OF OUR PRODUCT TO COMPLY WITH EXISTING REGULATIONS AND INSTRUCTIONS.