

## SPECIFICATION SHEET

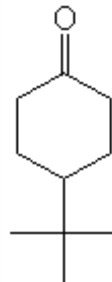
**VERSION** 1,00 **VERSION DATE** 19/09/22 **PRINT DATE** 17/05/24

**PRODUCT** IRISONE PCAS  
**APPLICATIONS** Industrial raw material not intended for direct use.  
**IUPAC NAME** 4-TERT-BUTYL-CYCLOHEXANONE  
**SYNONYMS** PARA-(1,1-DIMETHYLETHYL)-CYCLOHEXANONE; PATCHOULI KETONE

**FORMULA** C<sub>10</sub> H<sub>18</sub> O  
**MOLECULAR WEIGHT** 154,30  
**CAS** 98-53-3

**EINECS** 202-678-5

**FEMA** -  
**TARIFF NUMBER** 2914290090



**REACH REGISTRATION NO.** 01-2119835880-34

## SPECIFICATIONS

**ASPECT AT 20°C** CRYSTALLINE POWDER  
**COLOUR** WHITE TO OFF WHITE  
**ODOUR** IRIS, WOODY, CAMPHOR, MINTY, PATCHOULI  
**TASTE**  
**DENSITY AT 20°C (g / ml)** -  
**DENSITY 25/25** -  
**REFRACTIVE INDEX n<sub>D</sub>20** -  
**REFRACTIVE INDEX n<sub>D</sub>25** -  
**OPTICAL ROTATION (°)** /  
**BOILING POINT (°C)** -  
**MELTING POINT (°C)** 48 APROX.  
**FLASH POINT (°C)** 89,00  
**ASSAY (% GC)** > 98  
**ACID VALUE (mg KOH/g)** -  
**SOLUBILITY** SOLUBILITY IN WATER: 0,59 g/l (20°C)  
**VAPOUR PRESSURE** NOT DETERMINED  
**OTHER SOLUBILITIES** SOLUBLE IN ETHANOL

**OTHER TECHNICAL DATA** FIXATIVE IN IRIS, WOODY NOTES (PATCHOULI, VETIVER)

## STABILITY AND STORAGE

KEEP IN TIGHTLY CLOSED CONTAINER IN A COOL AND DRY PLACE, PROTECTED FROM LIGHT. WHEN STORED FOR MORE THAN 24 MONTHS, QUALITY SHOULD BE CHECKED BEFORE USE.

WE BELIEVE THE ABOVE INFORMATION TO BE CORRECT BUT WE DO NOT PRESENT IT AS ALL INCLUSIVE AND AS SUCH SHOULD BE USED AS A GUIDE. IT IS THE SOLE RESPONSIBILITY OF THE RECEIVER OF OUR PRODUCT TO COMPLY WITH EXISTING REGULATIONS AND INSTRUCTIONS.