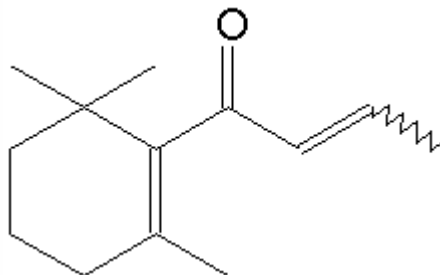


SPECIFICATION SHEET

VERSION	1,00	VERSION DATE	06/07/23	PRINT DATE	28/04/24
PRODUCT	DAMASCONE BETA NAT EU BESTALLY				
APPLICATIONS	Industrial raw material not intended for direct use.				
IUPAC NAME	(2E)-1-(2,6,6-TRIMETHYL-1-CYCLOHEXEN-1-YL)-2-BUTEN-1-ONE				
SYNONYMS					
PLANT OF ORIGIN					
PART OF THE PLANT					
FORMULA	C ₁₃ H ₂₀ O				
MOLECULAR WEIGHT	192,00				
CAS	23726-91-2				
EINECS	245-842-1				
FEMA	3243				
TARIFF NUMBER	2914290090				
FOOD GRADE CERTIFICATE	AVAILABLE ON REQUEST				
REACH REGISTRATION NO.	On request. REACH and non-REACH material available for this product.				



SPECIFICATIONS

ASPECT AT 20°C	CLEAR MOIBLE LIQUID	
COLOUR	COLORLESS TO PALE YELLOW	
ODOUR	FRUITY, FLORAL, INTENSE, PLUM, ROSE	
TASTE		
DENSITY AT 20°C (g / ml)	0,932	- 0,940
DENSITY 25/25	0,931	- 0,940
REFRACTIVE INDEX n_{D20}	1,4960	- 1,5000
REFRACTIVE INDEX n_{D25}	-	
OPTICAL ROTATION (°)	/	
BOILING POINT (°C)	CA. 254°C (97 kPa)	
MELTING POINT (°C)	CA. 9°C	
FLASH POINT (°C)	108,00	
ASSAY (% GC)	CIS+TRANS >98%	
ACID VALUE (mg KOH/g)	< 1	
SOLUBILITY	INSOLUBLE IN WATER	
VAPOUR PRESSURE	NOT DETERMINED	
OTHER SOLUBILITIES	SOLUBLE IN ETHANOL 90% 1:10.	

OTHER TECHNICAL DATA

STABILITY AND STORAGE

KEEP IN TIGHTLY CLOSED CONTAINER IN A COOL AND DRY PLACE, PROTECTED FROM LIGHT. WHEN STORED FOR MORE THAN 24 MONTHS, QUALITY SHOULD BE CHECKED BEFORE USE.
KEEP REFRIGERATED AND PURGE HEADSPACE WITH NITROGEN.

WE BELIEVE THE ABOVE INFORMATION TO BE CORRECT BUT WE DO NOT PRESENT IT AS ALL INCLUSIVE AND AS SUCH SHOULD BE USED AS A GUIDE.
IT IS THE SOLE RESPONSIBILITY OF THE RECEIVER OF OUR PRODUCT TO COMPLY WITH EXISTING REGULATIONS AND INSTRUCTIONS.

THIS PRODUCT HAS NOT BEEN FILTERED DUE TO TECHNICAL REASONS. WE RECOMMEND NOT TO USE IT UNLESS FILTERED WHEN USED AS A RAW MATERIAL IN FOOD INTENDED FOR FINAL CONSUMERS.