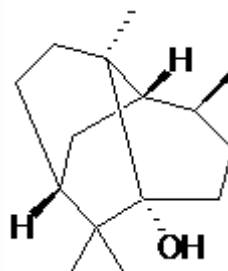


SPECIFICATION SHEET

VERSION	1,00	VERSION DATE	15/11/21	PRINT DATE	26/04/24
PRODUCT	PATCHOULOL				
APPLICATIONS	Industrial raw material not intended for direct use.				
IUPAC NAME	PATCHOULOL				
SYNONYMS					
PLANT OF ORIGIN	Pogostemon Cablin Benth				
PART OF THE PLANT	LEAVES				
FORMULA					
MOLECULAR WEIGHT	0,00				
CAS	5986-55-0				
EINECS	227-807-2				
FEMA	-				
TARIFF NUMBER	2906190090				



REACH REGISTRATION NO. Exempt from registration (imported/manufactured < 1 ton/year)

SPECIFICATIONS

ASPECT AT 20°C	POWDER/CRISTALS
COLOUR	WHITE
ODOUR	SWEET, FLORAL, WOODY, POWDERY
TASTE	
DENSITY AT 20°C (g / ml)	-
DENSITY 25/25	-
REFRACTIVE INDEX nD20	-
REFRACTIVE INDEX nD25	-
OPTICAL ROTATION (°)	/
BOILING POINT (°C)	-
MELTING POINT (°C)	
FLASH POINT (°C)	110,00
ASSAY (% GC)	> 99%
ACID VALUE (mg KOH/g)	
SOLUBILITY	INSOLUBLE IN WATER
VAPOUR PRESSURE	NOT DETERMINED
OTHER SOLUBILITIES	SOLUBLE IN ETHANOL

OTHER TECHNICAL DATA

STABILITY AND STORAGE

KEEP IN TIGHTLY CLOSED CONTAINER IN A COOL AND DRY PLACE, PROTECTED FROM LIGHT. WHEN STORED FOR MORE THAN 24 MONTHS, QUALITY SHOULD BE CHECKED BEFORE USE.

WE BELIEVE THE ABOVE INFORMATION TO BE CORRECT BUT WE DO NOT PRESENT IT AS ALL INCLUSIVE AND AS SUCH SHOULD BE USED AS A GUIDE. IT IS THE SOLE RESPONSIBILITY OF THE RECEIVER OF OUR PRODUCT TO COMPLY WITH EXISTING REGULATIONS AND INSTRUCTIONS.