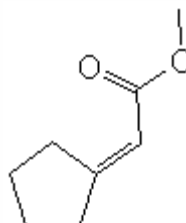


SPECIFICATION SHEET

VERSION 2,00 **VERSION DATE** 31/08/22 **PRINT DATE** 17/04/24

PRODUCT	CYCLOPIDENE FIRMENICH 937160
APPLICATIONS	Industrial raw material not intended for direct use.
IUPAC NAME	ACETIC ACID, CYCLOPENTYLIDENE-, METHYL ESTER
SYNONYMS	TUBEROSE ACETATE, METHYL CYCLOPENTYLIDENE ACETATE
FORMULA	C8 H12 O2
MOLECULAR WEIGHT	140,10
CAS	40203-73-4
EINECS	254-837-3
FEMA	-
TARIFF NUMBER	2916200090
KOSHER CERTIFICATE	AVAILABLE ON REQUEST
REACH REGISTRATION NO.	01-2120065587-45



SPECIFICATIONS

ASPECT AT 20°C	CLEAR MOBILE LIQUID
COLOUR	COLORLESS TO PALE YELLOW
ODOUR	FLORAL MODIFIER RELATED TO YLANG
TASTE	
DENSITY AT 20°C (g / ml)	1,004 - 1,012
DENSITY 25/25	1,003 - 1,011
REFRACTIVE INDEX nD20	1,4730 - 1,4770
REFRACTIVE INDEX nD25	1,4710 - 1,4750
OPTICAL ROTATION (°)	/
BOILING POINT (°C)	-
MELTING POINT (°C)	-
FLASH POINT (°C)	69,00
ASSAY (% GC)	> 90
ACID VALUE (mg KOH/g)	< 1
SOLUBILITY	INSOLUBLE IN WATER
VAPOUR PRESSURE	NOT DETERMINED
OTHER SOLUBILITIES	SOLUBLE IN ETHANOL

OTHER TECHNICAL DATA IT GIVES DIFFUSION AND LIFT. IT COMBINES THE SALICYLATE/CRESYL HARMONY THAT EXISTS IN MANY WHITE FLORALS.

STABILITY AND STORAGE

KEEP IN TIGHTLY CLOSED CONTAINER IN A COOL AND DRY PLACE, PROTECTED FROM LIGHT. WHEN STORED FOR MORE THAN 24 MONTHS, QUALITY SHOULD BE CHECKED BEFORE USE.
IT CONTAINS 0,05% BHT

WE BELIEVE THE ABOVE INFORMATION TO BE CORRECT BUT WE DO NOT PRESENT IT AS ALL INCLUSIVE AND AS SUCH SHOULD BE USED AS A GUIDE.
IT IS THE SOLE RESPONSIBILITY OF THE RECEIVER OF OUR PRODUCT TO COMPLY WITH EXISTING REGULATIONS AND INSTRUCTIONS.