

## SPECIFICATION SHEET

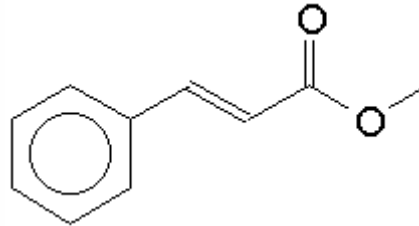
**VERSION** 1,00      **VERSION DATE** 10/11/15      **PRINT DATE** 17/08/22

**PRODUCT** METHYL CINNAMATE, NATURAL EX-PHENYLALANINE BESTALLY  
**APPLICATIONS** Raw material for industrial use intended for the manufacture of flavours and/or fragrances.  
**IUPAC NAME** METHYL CINNAMATE  
**SYNONYMS**

**PLANT OF ORIGIN**  
**PART OF THE PLANT** FERMENTATION OF PHENYLALANINE.  
**FORMULA** C10 H10 O2  
**MOLECULAR WEIGHT** 162,19  
**CAS** 103-26-4

**EINECS** 203-093-8

**FEMA** 2698  
**TARIFF NUMBER** 2916399090  
**KOSHER CERTIFICATE** AVAILABLE ON REQUEST  
**FOOD GRADE CERTIFICATE** AVAILABLE ON REQUEST  
**REACH REGISTRATION NO.** 01-2119979458-16



### SPECIFICATIONS

<b>ASPECT AT 20°C</b>	SOLID (POWDER FORM)
<b>COLOUR</b>	WHITE TO SLIGHTLY YELLOW
<b>ODOUR</b>	FRUITY, SWEET, CHERRY, STRAWBERRY
<b>TASTE</b>	FRUITY, STRAWBERRY-LIKE
<b>DENSITY AT 20°C (g / ml)</b>	-
<b>DENSITY 25/25</b>	-
<b>REFRACTIVE INDEX nD20</b>	-
<b>REFRACTIVE INDEX nD25</b>	-
<b>OPTICAL ROTATION (°)</b>	/
<b>BOILING POINT (°C)</b>	260
<b>MELTING POINT (°C)</b>	33 - 38
<b>FLASH POINT (°C)</b>	113,00
<b>ASSAY (% GC)</b>	> 99
<b>ACID VALUE (mg KOH/g)</b>	< 2
<b>SOLUBILITY</b>	INSOLUBLE IN WATER
<b>VAPOUR PRESSURE</b>	NOT DETERMINED
<b>OTHER SOLUBILITIES</b>	SOLUBLE IN ETHANOL. SOLUBLE 1 g IN 4 mL 80% ETHANOL.

### OTHER TECHNICAL DATA

### STABILITY AND STORAGE

KEEP IN TIGHTLY CLOSED CONTAINER IN A COOL AND DRY PLACE, PROTECTED FROM LIGHT. WHEN STORED FOR MORE THAN 24 MONTHS, QUALITY SHOULD BE CHECKED BEFORE USE.  
 KEEP AT TEMPERATURES BELOW 25°C

WE BELIEVE THE ABOVE INFORMATION TO BE CORRECT BUT WE DO NOT PRESENT IT AS ALL INCLUSIVE AND AS SUCH SHOULD BE USED AS A GUIDE. IT IS THE SOLE RESPONSIBILITY OF THE RECEIVER OF OUR PRODUCT TO COMPLY WITH EXISTING REGULATIONS AND INSTRUCTIONS.

THIS PRODUCT HAS NOT BEEN FILTERED DUE TO TECHNOLOGICAL REASONS. WE RECOMMEND NOT TO USE IT UNLESS FILTERED WHEN USED AS A RAW MATERIAL IN FOOD INTENDED FOR FINAL CONSUMERS.