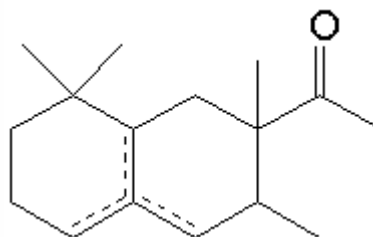


SPECIFICATION SHEET

VERSION	5,00	VERSION DATE	19/09/22	PRINT DATE	27/04/24
PRODUCT	ISO E SUPER® IFF				
APPLICATIONS	Industrial raw material not intended for direct use.				
IUPAC NAME	7-ACETYL-1...8-OCTAHYDRO-1,1,6,7-TETRAMETHYLNAPHTHALENE				
SYNONYMS	METHYL CYCLOMYRCETONE, ISO E SUPER, AMBOISE, ORBITONE, ISOCYCLEMONE				
FORMULA	C16 H26 O				
MOLECULAR WEIGHT	234,40				
CAS	54464-57-2				
CAS 2	68155-66-8				
EINECS	259-174-3				
EINECS 2	268-978-3				
TARIFF NUMBER	2914290090				
REACH REGISTRATION NO.	01-2119489989-04				



SPECIFICATIONS

ASPECT AT 20°C	SLIGHT VISCOUS CLEAR LIQUID	
COLOUR	COLORLESS-PALE YELLOW	
ODOUR	WOODY, FLORAL, AMBERGRIS	
TASTE		
DENSITY AT 20°C (g / ml)	0,961	- 0,967
DENSITY 25/25	0,960	- 0,966
REFRACTIVE INDEX nD20	1,4970	- 1,5010
REFRACTIVE INDEX nD25		-
OPTICAL ROTATION (°)		/
BOILING POINT (°C)	290°C (typ. anal.)	
MELTING POINT (°C)	-	
FLASH POINT (°C)	110,00	
ASSAY (% GC)	ALPHA10-20;BETA55-65;GAMMA8-16;CHARM1,5-4;SECT.>90	
ACID VALUE (mg KOH/g)		
SOLUBILITY	SOLUBILITY IN WATER: 2,000 at 20 °C	
VAPOUR PRESSURE	0,0002 calculated	
OTHER SOLUBILITIES	SOLUBLE IN ETHANOL	

OTHER TECHNICAL DATA

STABILITY AND STORAGE

KEEP IN TIGHTLY CLOSED CONTAINER IN A COOL AND DRY PLACE, PROTECTED FROM LIGHT. WHEN STORED FOR MORE THAN 24 MONTHS, QUALITY SHOULD BE CHECKED BEFORE USE.
STABILIZED WITH 0,1% BHT. KEEP BETWEEN 8-10°C.

WE BELIEVE THE ABOVE INFORMATION TO BE CORRECT BUT WE DO NOT PRESENT IT AS ALL INCLUSIVE AND AS SUCH SHOULD BE USED AS A GUIDE.
IT IS THE SOLE RESPONSIBILITY OF THE RECEIVER OF OUR PRODUCT TO COMPLY WITH EXISTING REGULATIONS AND INSTRUCTIONS.