

## SPECIFICATION SHEET

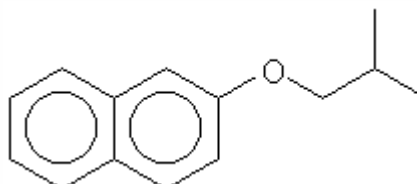
**VERSION** 3,00 **VERSION DATE** 19/09/22 **PRINT DATE** 19/04/24

**PRODUCT** NAPHTYL ISOBUTYL ETHER BETA IFF  
**APPLICATIONS** Industrial raw material not intended for direct use.  
**IUPAC NAME** BETA-NAPHTYL ISOBUTYL ETHER  
**SYNONYMS** BETA-NAPHTYL ISOBUTYL ETHER

**FORMULA** C14 H16 O  
**MOLECULAR WEIGHT** 200,00  
**CAS** 2173-57-1

**EINECS** 218-529-2

**FEMA** 3719  
**TARIFF NUMBER** 2909199090



**REACH REGISTRATION NO.** 01-2120735662-54

## SPECIFICATIONS

<b>ASPECT AT 20°C</b>	LIQUID / SOLID
<b>COLOUR</b>	WHITE
<b>ODOUR</b>	FLORAL,STRAWBERRY,SWEET,NEROLI
<b>TASTE</b>	
<b>DENSITY AT 20°C (g / ml)</b>	-
<b>DENSITY 25/25</b>	-
<b>REFRACTIVE INDEX nD20</b>	-
<b>REFRACTIVE INDEX nD25</b>	-
<b>OPTICAL ROTATION (°)</b>	/
<b>BOILING POINT (°C)</b>	-
<b>MELTING POINT (°C)</b>	> 32
<b>FLASH POINT (°C)</b>	93,00
<b>ASSAY (% GC)</b>	> 97
<b>ACID VALUE (mg KOH/g)</b>	-
<b>SOLUBILITY</b>	INSOLUBLE IN WATER
<b>VAPOUR PRESSURE</b>	< 0,1 kPa (20°C)
<b>OTHER SOLUBILITIES</b>	SOLUBLE IN ETHANOL

## OTHER TECHNICAL DATA

## STABILITY AND STORAGE

KEEP IN TIGHTLY CLOSED CONTAINER IN A COOL AND DRY PLACE, PROTECTED FROM LIGHT. WHEN STORED FOR MORE THAN 24 MONTHS, QUALITY SHOULD BE CHECKED BEFORE USE.  
 KEEP BETWEEN 8 -10°C

WE BELIEVE THE ABOVE INFORMATION TO BE CORRECT BUT WE DO NOT PRESENT IT AS ALL INCLUSIVE AND AS SUCH SHOULD BE USED AS A GUIDE.  
 IT IS THE SOLE RESPONSIBILITY OF THE RECEIVER OF OUR PRODUCT TO COMPLY WITH EXISTING REGULATIONS AND INSTRUCTIONS.