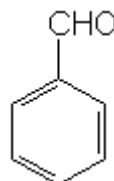


SPECIFICATION SHEET

VERSION	2,00	VERSION DATE	19/09/22	PRINT DATE	19/04/24
PRODUCT	BENZALDEHYDE NATURAL EU BESTALLY				
APPLICATIONS	Industrial raw material not intended for direct use.				
IUPAC NAME	BENZALDEHYDE				
SYNONYMS	BENZALDEHYDE,BENZENECARBONAL,BENZENECARBOXALDEHYDE,PHENYLMETHANAL				
PLANT OF ORIGIN	Cinnamomum cassia L.				
PART OF THE PLANT	Bark and branch				
FORMULA	C7 H6 O				
MOLECULAR WEIGHT	106,00				
CAS	100-52-7				
EINECS	202-860-4				
FEMA	2127				
TARIFF NUMBER	2912210000				
KOSHER CERTIFICATE	AVAILABLE ON REQUEST				
FOOD GRADE CERTIFICATE	AVAILABLE ON REQUEST				
REACH REGISTRATION NO.	On request. REACH and non-REACH material available for this product.				



SPECIFICATIONS

ASPECT AT 20°C	CLEAR MOBILE LIQUID	
COLOUR	COLORLESS TO PALE YELLOW	
ODOUR	ALMOND-LIKE	
TASTE		
DENSITY AT 20°C (g / ml)	1,041	- 1,046
DENSITY 25/25	-	
REFRACTIVE INDEX nD20	1,5440	- 1,5460
REFRACTIVE INDEX nD25	-	
OPTICAL ROTATION (°)	/	
BOILING POINT (°C)	179 (760 mm Hg);112,5 (100 mm)	
MELTING POINT (°C)	-26	
FLASH POINT (°C)	64,00	
ASSAY (% GC)	> 98	
ACID VALUE (mg KOH/g)	< 5	
SOLUBILITY	SOLUBILITY IN WATER: 0,6%	
VAPOUR PRESSURE	0,75 mm Hg 20°C;10 mm Hg 62°C	
OTHER SOLUBILITIES	SOLUBLE IN ETHANOL	

OTHER TECHNICAL DATA

STABILITY AND STORAGE

KEEP IN TIGHTLY CLOSED CONTAINER IN A COOL AND DRY PLACE, PROTECTED FROM LIGHT. WHEN STORED FOR MORE THAN 12 MONTHS, QUALITY SHOULD BE CHECKED BEFORE USE.
PURGE HEADSPACE WITH NITROGEN.

WE BELIEVE THE ABOVE INFORMATION TO BE CORRECT BUT WE DO NOT PRESENT IT AS ALL INCLUSIVE AND AS SUCH SHOULD BE USED AS A GUIDE.
IT IS THE SOLE RESPONSIBILITY OF THE RECEIVER OF OUR PRODUCT TO COMPLY WITH EXISTING REGULATIONS AND INSTRUCTIONS.

THIS PRODUCT HAS NOT BEEN FILTERED DUE TO TECHNICAL REASONS. WE RECOMMEND NOT TO USE IT UNLESS FILTERED WHEN USED AS A RAW MATERIAL IN FOOD INTENDED FOR FINAL CONSUMERS.