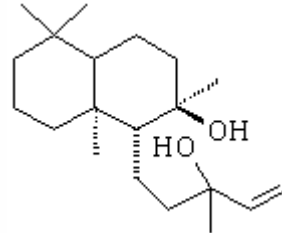


SPECIFICATION SHEET

VERSION 3,00 **VERSION DATE** 11/02/10 **PRINT DATE** 12/08/22

PRODUCT SCLAREOL NATURAL
APPLICATIONS Raw material for industrial use intended for the manufacture of flavours and/or fragrances.
IUPAC NAME SCLAREOL
SYNONYMS

PLANT OF ORIGIN Salvia sclarea
PART OF THE PLANT CONCRETE OF CLARY SAGE
FORMULA C₂₀ H₃₆ O₂
MOLECULAR WEIGHT 308,50
CAS 515-03-7



EINECS 208-194-0

FEMA 4502
TARIFF NUMBER 2906190090

REACH REGISTRATION NO. Exempt from registration (imported/manufactured < 1 ton/year)

SPECIFICATIONS

ASPECT AT 20°C	SOLID (POWDER)
COLOUR	WHITE
ODOUR	NEARLY ODORLESS
TASTE	
DENSITY AT 20°C (g / ml)	-
DENSITY 25/25	-
REFRACTIVE INDEX n_D20	-
REFRACTIVE INDEX n_D25	-
OPTICAL ROTATION (°)	/
BOILING POINT (°C)	-
MELTING POINT (°C)	100 - 104
FLASH POINT (°C)	101,00
ASSAY (% GC)	> 98; ACETONE < 0,5
ACID VALUE (mg KOH/g)	
SOLUBILITY	INSOLUBLE IN WATER.
VAPOUR PRESSURE	NOT DETERMINED
OTHER SOLUBILITIES	MODERATELY SOLUBLE IN ETHANOL.

OTHER TECHNICAL DATA

STABILITY AND STORAGE

KEEP IN TIGHTLY CLOSED CONTAINER IN A COOL AND DRY PLACE, PROTECTED FROM LIGHT. WHEN STORED FOR MORE THAN 24 MONTHS, QUALITY SHOULD BE CHECKED BEFORE USE.

WE BELIEVE THE ABOVE INFORMATION TO BE CORRECT BUT WE DO NOT PRESENT IT AS ALL INCLUSIVE AND AS SUCH SHOULD BE USED AS A GUIDE. IT IS THE SOLE RESPONSIBILITY OF THE RECEIVER OF OUR PRODUCT TO COMPLY WITH EXISTING REGULATIONS AND INSTRUCTIONS.