

SPECIFICATION SHEET

VERSION 9,00 **VERSION DATE** 02/10/23 **PRINT DATE** 25/04/24

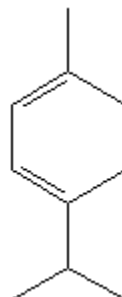
PRODUCT TERPINENE ALPHA
APPLICATIONS Industrial raw material not intended for direct use.
IUPAC NAME 1-METHYL-4-ISOPROPYLCYCLOHEXADIENE-1,3
SYNONYMS P-MENTHA-1,3-DIENE

FORMULA C10 H16
MOLECULAR WEIGHT 136,00
CAS 99-86-5

EINECS 202-795-1

FEMA 3558
TARIFF NUMBER 2902190000

FOOD GRADE CERTIFICATE AVAILABLE ON REQUEST
REACH REGISTRATION NO. On request. REACH and non-REACH material available for this product.



SPECIFICATIONS

ASPECT AT 20°C	CLEAR MOBILE LIQUID
COLOUR	COLORLESS
ODOUR	CITRIC, LEMON, REFRESHING
TASTE	
DENSITY AT 20°C (g / ml)	0,835 - 0,848
DENSITY 25/25	-
REFRACTIVE INDEX nD20	1,4750 - 1,4790
REFRACTIVE INDEX nD25	-
OPTICAL ROTATION (°)	/
BOILING POINT (°C)	177-183 (760 mm Hg)
MELTING POINT (°C)	-48°C
FLASH POINT (°C)	55,00
ASSAY (% GC)	> 89
ACID VALUE (mg KOH/g)	-
SOLUBILITY	INSOLUBLE IN WATER
VAPOUR PRESSURE	150 Pa (20°C); 940 Pa (50°C)
OTHER SOLUBILITIES	SOLUBLE IN ETHANOL 90%

OTHER TECHNICAL DATA REGULATION 872/2012 UE: ALPHA-PHELLANDRENE + 1,4-CINEOLE + ALPHA-TERPINENE + LIMONENE + 1,8-CINEOLE + P-CIMENE > 95%. PEROXIDES < 10 mmol/l.

STABILITY AND STORAGE

KEEP IN TIGHTLY CLOSED CONTAINER IN A COOL AND DRY PLACE, PROTECTED FROM LIGHT. WHEN STORED FOR MORE THAN 24 MONTHS, QUALITY SHOULD BE CHECKED BEFORE USE.
PURGE HEADSPACE WITH NITROGEN.

WE BELIEVE THE ABOVE INFORMATION TO BE CORRECT BUT WE DO NOT PRESENT IT AS ALL INCLUSIVE AND AS SUCH SHOULD BE USED AS A GUIDE. IT IS THE SOLE RESPONSIBILITY OF THE RECEIVER OF OUR PRODUCT TO COMPLY WITH EXISTING REGULATIONS AND INSTRUCTIONS.

THIS PRODUCT HAS NOT BEEN FILTERED DUE TO TECHNICAL REASONS. WE RECOMMEND NOT TO USE IT UNLESS FILTERED WHEN USED AS A RAW MATERIAL IN FOOD INTENDED FOR FINAL CONSUMERS.