

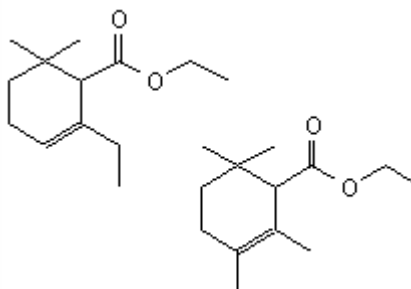
SPECIFICATION SHEET

VERSION 2,00 **VERSION DATE** 17/01/24 **PRINT DATE** 20/05/24

PRODUCT GIVESCONE
APPLICATIONS Industrial raw material not intended for direct use.
IUPAC NAME ETHYL 2-ETHYL-6-DIMETHYL-2-CYCLOHEXENECARBOXYATE & ISOMERS
SYNONYMS

FORMULA C13 H22 O2
MOLECULAR WEIGHT 210,00
CAS 57934-97-1
CAS 2 77851-07-1
EINECS 261-020-5
EINECS 2 278-776-7

TARIFF NUMBER 2916200090



REACH REGISTRATION NO. 01-2120139916-47

SPECIFICATIONS

ASPECT AT 20°C	CLEAR MOBILE LIQUID	
COLOUR	COLORLESS TO PALE YELLOW	
ODOUR	SPICY, ROSY, FRUITY, WOODY	
TASTE		
DENSITY AT 20°C (g / ml)	0,938	- 0,948
DENSITY 25/25		-
REFRACTIVE INDEX nD20	1,4610	- 1,4650
REFRACTIVE INDEX nD25		-
OPTICAL ROTATION (°)		/
BOILING POINT (°C)	-	
MELTING POINT (°C)		
FLASH POINT (°C)	91,00	
ASSAY (% GC)	SUM ISOMERS > 98	
ACID VALUE (mg KOH/g)	-	
SOLUBILITY	INSOLUBLE IN WATER	
VAPOUR PRESSURE	NOT DETERMINED	
OTHER SOLUBILITIES	SOLUBLE IN ETHANOL	

OTHER TECHNICAL DATA

STABILITY AND STORAGE

KEEP IN TIGHTLY CLOSED CONTAINER IN A COOL AND DRY PLACE, PROTECTED FROM LIGHT. WHEN STORED FOR MORE THAN 24 MONTHS, QUALITY SHOULD BE CHECKED BEFORE USE.
IT CONTAINS 250 ppm OF BHT

WE BELIEVE THE ABOVE INFORMATION TO BE CORRECT BUT WE DO NOT PRESENT IT AS ALL INCLUSIVE AND AS SUCH SHOULD BE USED AS A GUIDE.
IT IS THE SOLE RESPONSIBILITY OF THE RECEIVER OF OUR PRODUCT TO COMPLY WITH EXISTING REGULATIONS AND INSTRUCTIONS.