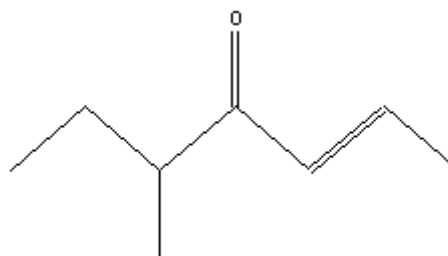


SPECIFICATION SHEET

VERSION 4,00 **VERSION DATE** 21/08/20 **PRINT DATE** 09/11/24

PRODUCT 5-METHYL-2-HEPTEN-4-ONE
APPLICATIONS Industrial raw material not intended for direct use.
IUPAC NAME 5-METHYL-2-HEPTEN-4-ONE
SYNONYMS FILBERTONE, 5-METHYL-2-HEPTEN-4-ONE

FORMULA C8 H14 O
MOLECULAR WEIGHT 126,00
CAS 102322-83-8
CAS 2 81925-81-7
EINECS 600-299-3
EINECS 2 617-270-6
FEMA 3761
TARIFF NUMBER 2914199090
KOSHER CERTIFICATE AVAILABLE ON REQUEST
FOOD GRADE CERTIFICATE AVAILABLE ON REQUEST
REACH REGISTRATION NO. 01-2120136879-40



SPECIFICATIONS

ASPECT AT 20°C	CLEAR MOBILE LIQUID
COLOUR	FROM COLORLESS TO YELLOW
ODOUR	NUT, HAZELNUT, ROASTY, FATTY, SWEET
TASTE	NUT, HAZELNUT, ROASTY, FATTY, SWEET
DENSITY AT 20°C (g / ml)	0,847 - 0,853
DENSITY 25/25	-
REFRACTIVE INDEX nD20	1,4420 - 1,4460
REFRACTIVE INDEX nD25	-
OPTICAL ROTATION (°)	/
BOILING POINT (°C)	173
MELTING POINT (°C)	
FLASH POINT (°C)	57,00
ASSAY (% GC)	SUM CIS+TRANS > 98
ACID VALUE (mg KOH/g)	
SOLUBILITY	INSOLUBLE IN WATER
VAPOUR PRESSURE	NOT DETERMINED
OTHER SOLUBILITIES	SOLUBLE IN ETHANOL

OTHER TECHNICAL DATA IT IS NORMAL TO HAVE LIGHT YELLOW/COLORLESS BATCHES AND BATCHES WHICH ARE YELLOW.

STABILITY AND STORAGE

KEEP IN TIGHTLY CLOSED CONTAINER IN A COOL AND DRY PLACE, PROTECTED FROM LIGHT. WHEN STORED FOR MORE THAN 24 MONTHS, QUALITY SHOULD BE CHECKED BEFORE USE.
 APROX 0,05% ALPHA-TOCOPHEROL.

WE BELIEVE THE ABOVE INFORMATION TO BE CORRECT BUT WE DO NOT PRESENT IT AS ALL INCLUSIVE AND AS SUCH SHOULD BE USED AS A GUIDE. IT IS THE SOLE RESPONSIBILITY OF THE RECEIVER OF OUR PRODUCT TO COMPLY WITH EXISTING REGULATIONS AND INSTRUCTIONS.

THIS PRODUCT HAS NOT BEEN FILTERED DUE TO TECHNICAL REASONS. WE RECOMMEND NOT TO USE IT UNLESS FILTERED WHEN USED AS A RAW MATERIAL IN FOOD INTENDED FOR FINAL CONSUMERS.