

## SPECIFICATION SHEET

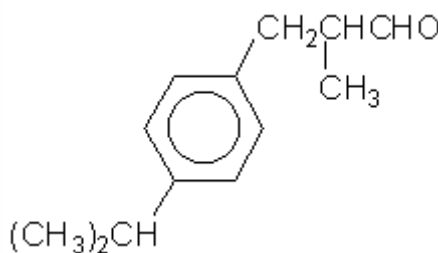
**VERSION** 2,00 **VERSION DATE** 11/10/22 **PRINT DATE** 25/04/24

**PRODUCT** CYCLAMEN ALDEHYDE  
**APPLICATIONS** Industrial raw material not intended for direct use.  
**IUPAC NAME** 2-METHYL-3-(PARA-ISOPROPYLPHENYL)-PROPIONALDEHYDE  
**SYNONYMS** CICLAMAL, CYCLOSAL, CYCLAVIOL

**FORMULA** C13 H18 O  
**MOLECULAR WEIGHT** 190,28  
**CAS** 103-95-7

**EINECS** 203-161-7

**FEMA** 2743  
**TARIFF NUMBER** 2912290090  
**KOSHER CERTIFICATE** AVAILABLE ON REQUEST



**REACH REGISTRATION NO.** 01-2119970582-32

## SPECIFICATIONS

<b>ASPECT AT 20°C</b>	CLEAR MOBILE LIQUID
<b>COLOUR</b>	COLORLESS TO PALE YELLOW
<b>ODOUR</b>	FLORAL, LILY OF THE VALLEY, CYCLAMEN
<b>TASTE</b>	
<b>DENSITY AT 20°C (g / ml)</b>	0,946 - 0,950
<b>DENSITY 25/25</b>	0,945 - 0,949
<b>REFRACTIVE INDEX nD20</b>	1,5030 - 1,5070
<b>REFRACTIVE INDEX nD25</b>	1,5010 - 1,5050
<b>OPTICAL ROTATION (°)</b>	/
<b>BOILING POINT (°C)</b>	270
<b>MELTING POINT (°C)</b>	-
<b>FLASH POINT (°C)</b>	75,00
<b>ASSAY (% GC)</b>	> 98,5; CYCLAMEN ALCOHOL < 1,5%
<b>ACID VALUE (mg KOH/g)</b>	< 2
<b>SOLUBILITY</b>	INSOLUBLE IN WATER
<b>VAPOUR PRESSURE</b>	0,0053 hPa (20°C)
<b>OTHER SOLUBILITIES</b>	SOLUBLE IN ETHANOL

## OTHER TECHNICAL DATA

## STABILITY AND STORAGE

KEEP IN TIGHTLY CLOSED CONTAINER IN A COOL AND DRY PLACE, PROTECTED FROM LIGHT. WHEN STORED FOR MORE THAN 12 MONTHS, QUALITY SHOULD BE CHECKED BEFORE USE.  
 PURGE HEADSPACE WITH NITROGEN. CONTAINS 0,02% OF ALPHA TOCOPHEROL.

WE BELIEVE THE ABOVE INFORMATION TO BE CORRECT BUT WE DO NOT PRESENT IT AS ALL INCLUSIVE AND AS SUCH SHOULD BE USED AS A GUIDE.  
 IT IS THE SOLE RESPONSIBILITY OF THE RECEIVER OF OUR PRODUCT TO COMPLY WITH EXISTING REGULATIONS AND INSTRUCTIONS.