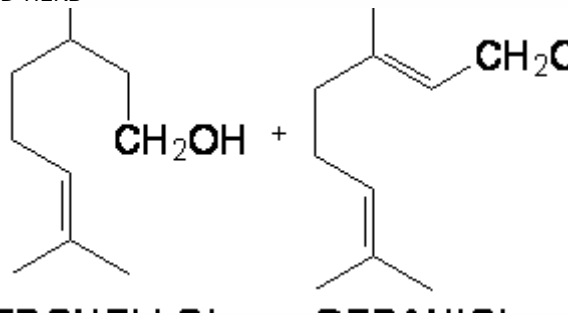


SPECIFICATION SHEET

VERSION	1,00	VERSION DATE	19/09/22	PRINT DATE	27/07/24
PRODUCT	RHODINOL, NATURAL INDESSO 945 (EX-CITRONELLA)				
APPLICATIONS	Industrial raw material not intended for direct use.				
IUPAC NAME	RHODINOL				
SYNONYMS					
PLANT OF ORIGIN	Cymbopogon winterlanus				
PART OF THE PLANT	FRESH OR PARTIALLY DRIED HERB				
FORMULA	C ₁₀ H ₂₀ O				
MOLECULAR WEIGHT	156,00				
CAS	141-25-3				
EINECS	205-473-9				
FEMA	2980				
TARIFF NUMBER	2905220090				
FOOD GRADE CERTIFICATE	AVAILABLE ON REQUEST				
REACH REGISTRATION NO.	On request. REACH and non-REACH material available for this product.				



SPECIFICATIONS

ASPECT AT 20°C	CLEAR MOBILE LIQUID	
COLOUR	COLORLESS TO PALE YELLOW	
ODOUR	SWEET, ROSY, FLORAL, WAXY, FRESH, CITRUS	
TASTE		
DENSITY AT 20°C (g / ml)	0,875	- 0,908
DENSITY 25/25	0,872	- 0,905
REFRACTIVE INDEX n_{D20}	1,4690	- 1,4820
REFRACTIVE INDEX n_{D25}		-
OPTICAL ROTATION (°)		/
BOILING POINT (°C)	-	
MELTING POINT (°C)	-	
FLASH POINT (°C)	101,00	
ASSAY (% GC)	CITRONELLOL 12-25%; GERANIOL 28-48%	
ACID VALUE (mg KOH/g)	-	
SOLUBILITY	INSOLUBLE IN WATER	
VAPOUR PRESSURE	NOT DETERMINED	
OTHER SOLUBILITIES	SOLUBLE IN ETHANOL	

OTHER TECHNICAL DATA FRACTIONATION OF JAVA CITRONELLA OIL FOLLOWED BY ISOLATION-EXTRACTION PROCESS.

STABILITY AND STORAGE

KEEP IN TIGHTLY CLOSED CONTAINER IN A COOL AND DRY PLACE, PROTECTED FROM LIGHT. WHEN STORED FOR MORE THAN 24 MONTHS, QUALITY SHOULD BE CHECKED BEFORE USE.

WE BELIEVE THE ABOVE INFORMATION TO BE CORRECT BUT WE DO NOT PRESENT IT AS ALL INCLUSIVE AND AS SUCH SHOULD BE USED AS A GUIDE. IT IS THE SOLE RESPONSIBILITY OF THE RECEIVER OF OUR PRODUCT TO COMPLY WITH EXISTING REGULATIONS AND INSTRUCTIONS.

THIS PRODUCT HAS NOT BEEN FILTERED DUE TO TECHNICAL REASONS. WE RECOMMEND NOT TO USE IT UNLESS FILTERED WHEN USED AS A RAW MATERIAL IN FOOD INTENDED FOR FINAL CONSUMERS.