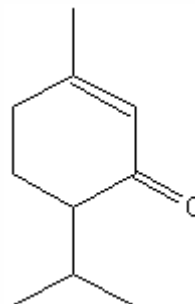


SPECIFICATION SHEET

VERSION	2,00	VERSION DATE	19/09/22	PRINT DATE	23/04/24
PRODUCT	PIPERITONE NATURAL				
APPLICATIONS	Industrial raw material not intended for direct use.				
IUPAC NAME	3-METHYL-6-(1-METHYLETHYL)-2-CYCLOHEXEN-1-ONE				
SYNONYMS					
PLANT OF ORIGIN	Eucalyptus dives				
PART OF THE PLANT					
FORMULA	C ₁₀ H ₁₆ O				
MOLECULAR WEIGHT	152,24				
CAS	89-81-6				
CAS 2	4573-50-6				
EINECS	201-942-7				
EINECS 2	224-957-0				
FEMA	2910				
TARIFF NUMBER	2914290090				
FOOD GRADE CERTIFICATE	AVAILABLE ON REQUEST				
REACH REGISTRATION NO.	On request. REACH and non-REACH material available for this product.				



SPECIFICATIONS

ASPECT AT 20°C	CLEAR MOBILE LIQUID		
COLOUR	COLORLESS TO PALE YELLOW		
ODOUR	MINT, SWEET, FRESH, HERBAL, CAMPHOR		
TASTE			
DENSITY AT 20°C (g / ml)	0,927	-	0,937
DENSITY 25/25		-	
REFRACTIVE INDEX n_D20	1,4800	-	1,4880
REFRACTIVE INDEX n_D25		-	
OPTICAL ROTATION (°)		/	
BOILING POINT (°C)	233°C (760 mm Hg)		
MELTING POINT (°C)	-		
FLASH POINT (°C)	98,00		
ASSAY (% GC)	> 95		
ACID VALUE (mg KOH/g)			
SOLUBILITY	NEARLY INSOLUBLE IN WATER		
VAPOUR PRESSURE	< 1 mm Hg (20°C)		
OTHER SOLUBILITIES	SOLUBLE IN ETHANOL. SOLUBLE 1:3 IN ETHANOL 60%.		
OTHER TECHNICAL DATA	USUALLY OPTICAL ROTATION IS -70°/-30° APPROX. AND CHIRAL ISOMER RATIO L/D IS 75:25 APPROX.		

STABILITY AND STORAGE

KEEP IN TIGHTLY CLOSED CONTAINER IN A COOL AND DRY PLACE, PROTECTED FROM LIGHT. WHEN STORED FOR MORE THAN 24 MONTHS, QUALITY SHOULD BE CHECKED BEFORE USE.

WE BELIEVE THE ABOVE INFORMATION TO BE CORRECT BUT WE DO NOT PRESENT IT AS ALL INCLUSIVE AND AS SUCH SHOULD BE USED AS A GUIDE. IT IS THE SOLE RESPONSIBILITY OF THE RECEIVER OF OUR PRODUCT TO COMPLY WITH EXISTING REGULATIONS AND INSTRUCTIONS.

THIS PRODUCT HAS NOT BEEN FILTERED DUE TO TECHNICAL REASONS. WE RECOMMEND NOT TO USE IT UNLESS FILTERED WHEN USED AS A RAW MATERIAL IN FOOD INTENDED FOR FINAL CONSUMERS.